



Photograph of Leonard Walker

Brief description: Black and white photograph - mounted on thick cardboard - of Leonard Walker creating watercolour cartoons for the three windows dedicated to Henry Hodson at St. Ethelburga, Bishopsgate in his studio (at 151A King Henrys Road, Hampstead, London, N.W.3).

Black and white photograph c1920-25 - mounted on thick cardboard - of L. Walker creating watercolour cartoons (& working on the third light) for the three light window dedicated to the adventures of Henry Hodson at St. Ethelburga, Bishopsgate (he and his crew took communion here in 1607 before they set out on their quest for the North-West passage) in his studio at 151A King Henrys Road, Hampstead, London, N.W.3. The three large windows were designed for the relatively weak and pale light which St. Etheldreda's windows let into the building (see p8 of 'The Future of Stained Glass - Walker, Leonard' Library Reference: 5.2 Wal. L.) NB: Robert Drake noted that he recognised the image as coming from St. Ethelburga. Also that the window was destroyed by an IRA Bishopsgate bomb in April 1993. The 1992 Baltic Exchange and 1994 Bishopsgate IRA bombs caused considerable damage in this area of London and affected the Leatherseller's Company building which also contained a Leonard Walker stained glass window showing King Henry VI conferring the Company's first charter in 1444. The Leatherseller's window was made in 1937 and saved from destruction by being stored outside London during World War II. In 1992 it was badly damaged by the Baltic Exchange terrorist bomb but fortunately was able to be restored.



Object type: photograph

Number of objects: 1

Production date: 1920

Production period: 20th century

Manufacturer: Photopress printers

Dimensions: Height: 147 mm, Width: 194 mm

Inscription: mounting conceals any photograph source details back of photograph

Acquisition: gift 25.11.2010

Acquisition source: Walker, Renton M.

This item is not currently on display and can only be viewed by prior arrangement

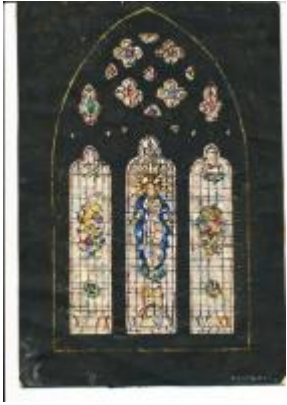
Accession number: ELYGM:2012.1.42

Permalink:

<https://stainedglassmuseum.com/object/ELYGM:2012.1.42>

Related objects

[ELYGM:2012.1.1](#)



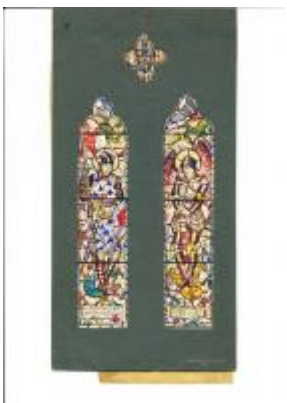
[ELYGM:2012.1.2](#)



[ELYGM:2012.1.3](#)



[ELYGM:2012.1.4](#)





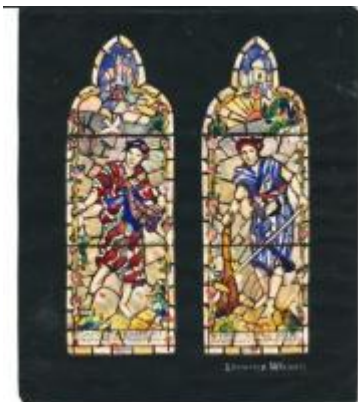
[ELYGM:2012.1.5](#)



[ELYGM:2012.1.6](#)



[ELYGM:2012.1.7](#)



[ELYGM:2012.1.8](#)



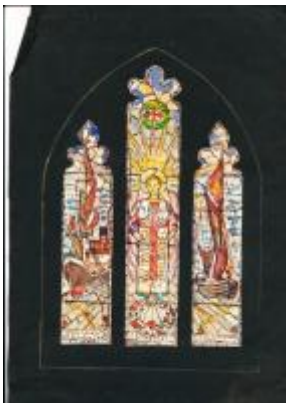
[ELYGM:2012.1.9](#)



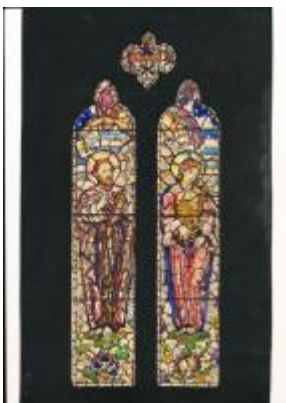
[ELYGM:2012.1.10](#)



[ELYGM:2012.1.11](#)



[ELYGM:2012.1.12](#)

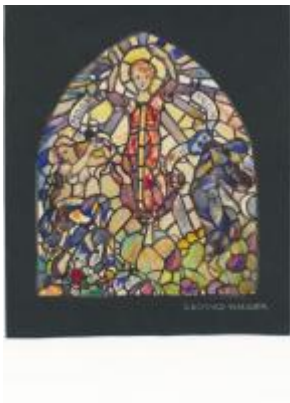




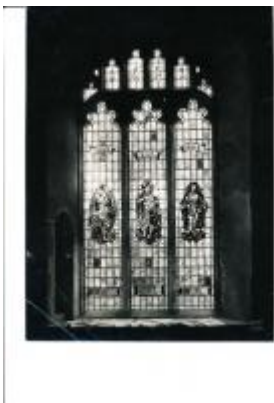
[ELYGM:2012.1.13](#)



[ELYGM:2012.1.14](#)



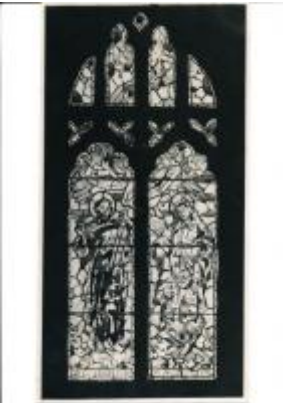
[ELYGM:2012.1.15](#)



[ELYGM:2012.1.16](#)



[ELYGM:2012.1.17](#)



[ELYGM:2012.1.18](#)



[ELYGM:2012.1.19](#)





[ELYGM:2012.1.20](#)



[ELYGM:2012.1.21](#)



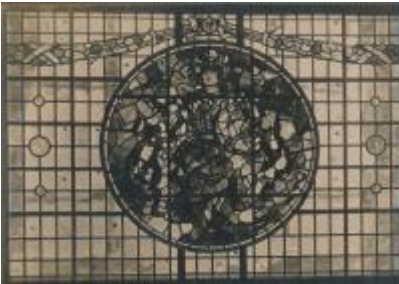
[ELYGM:2012.1.22](#)



[ELYGM:2012.1.23](#)



[ELYGM:2012.1.24](#)



[ELYGM:2012.1.25](#)



[ELYGM:2012.1.26](#)



[ELYGM:2012.1.27](#)



[ELYGM:2012.1.28](#)



[ELYGM:2012.1.29](#)



[ELYGM:2012.1.30](#)





[ELYGM:2012.1.31](#)



[ELYGM:2012.1.32](#)



[ELYGM:2012.1.33](#)



[ELYGM:2012.1.34](#)



[ELYGM:2012.1.35](#)



[ELYGM:2012.1.36](#)



[ELYGM:2012.1.37](#)



[ELYGM:2012.1.38](#)



[ELYGM:2012.1.39](#)



[ELYGM:2012.1.40](#)



[ELYGM:2012.1.41](#)



[ELYGM:2012.1.43](#)



[ELYGM:2012.1.44](#)



[ELYGM:2012.1.46](#)





Photograph of Leonard Walker

