



## Design for St George and Archangel Michael window

**Brief description:** Design by Leonard Walker for St. Chads Church, Middlesmoor, Yorkshire.

Design for window consisting of 2 main lights and 1 upper light, thought to be for the south aisle of St. Chads church, Middlesmoor, Yorkshire. The two main lights depict St George in armour, and Archangel Michael in armour. In the completed window and inscription runs across the main lights reading 'IN DEAR REMEMBRANCE OF HESKETH ADAIR RAMSDEN LOVED HUSBAND OF JOAN AND FATHER OF SUSAN JUDITH AND JONATHAN NOVEMBER 1899 APRIL 1940.' The Ramsden family paid for the window.

**Object type:** design

**Number of objects:** 1

**Production date:** 1946

**Production period:** 20th century, mid

**Designer:** Leonard Walker

**Manufacturer:** Walker, Leonard 1877=1964

**Dimensions:** Height: 273 mm, Width: 137 mm

**Inscription:** fountain-pen note Back of design (top) This design to be returned to Leonard Walker R.I. Studio 151A King Henrys Road London N.W.3.

**Dedication:** dedicated to Ramsden, Hesketh, Adair (d. 23 April 1940)

**Acquisition:** gift 25.11.2010

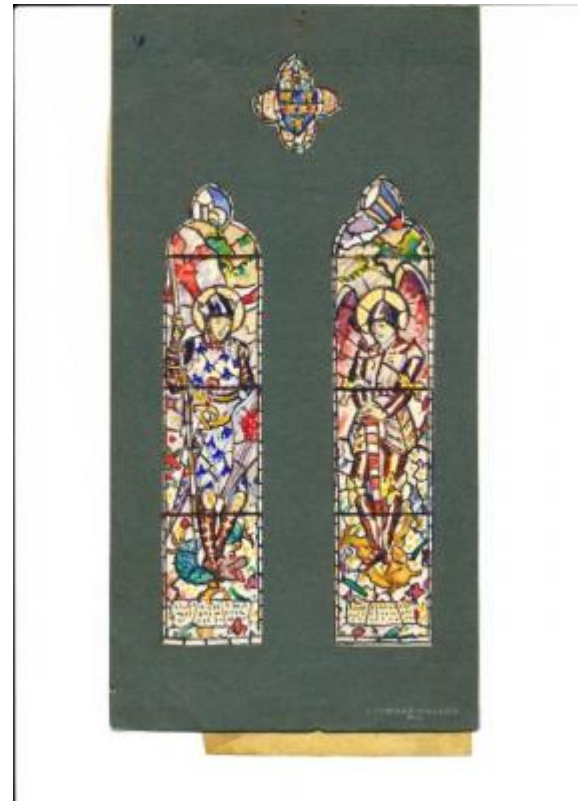
**Acquisition source:** Walker, Renton M.

**Bibliographical references:** Flickr Yorkshire Middlesmoor / jmc4

This item is not currently on display and can only be viewed by prior arrangement

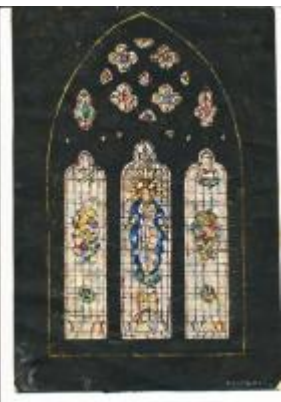
**Accession number:** ELYGM:2012.1.4

**Permalink:** <https://stainedglassmuseum.com/object/ELYGM:2012.1.4>



### Related objects

[ELYGM:2012.1.1](#)



[ELYGM:2012.1.2](#)



[ELYGM:2012.1.3](#)



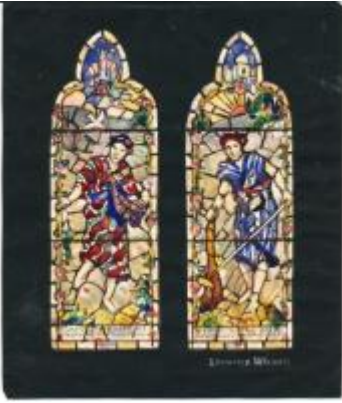
[ELYGM:2012.1.5](#)



[ELYGM:2012.1.6](#)



[ELYGM:2012.1.7](#)



[ELYGM:2012.1.8](#)



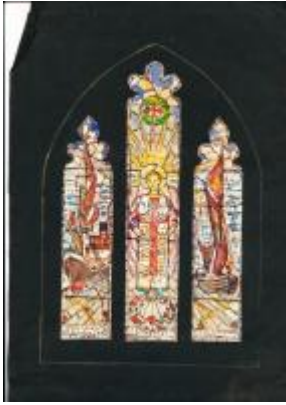
[ELYGM:2012.1.9](#)



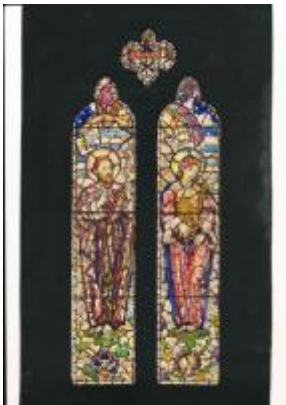
[ELYGM:2012.1.10](#)



[ELYGM:2012.1.11](#)



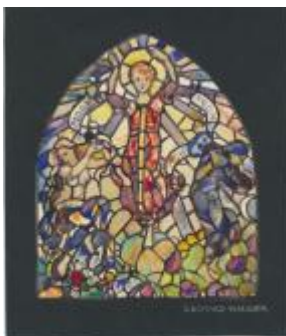
[ELYGM:2012.1.12](#)



[ELYGM:2012.1.13](#)



[ELYGM:2012.1.14](#)





[ELYGM:2012.1.15](#)



[ELYGM:2012.1.16](#)



[ELYGM:2012.1.17](#)



[ELYGM:2012.1.18](#)



[ELYGM:2012.1.19](#)



[ELYGM:2012.1.20](#)



[ELYGM:2012.1.21](#)





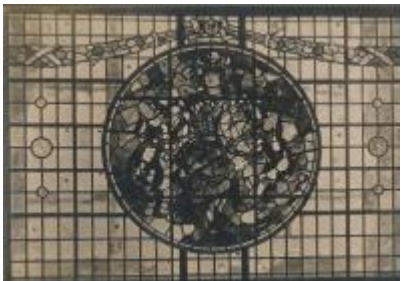
[ELYGM:2012.1.22](#)



[ELYGM:2012.1.23](#)



[ELYGM:2012.1.24](#)



[ELYGM:2012.1.25](#)



[ELYGM:2012.1.26](#)



[ELYGM:2012.1.27](#)



[ELYGM:2012.1.28](#)



[ELYGM:2012.1.29](#)

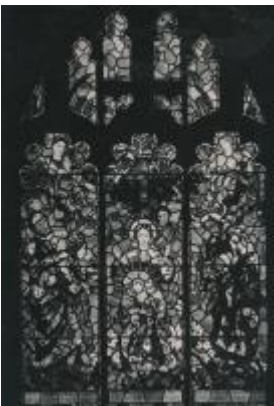




[ELYGM:2012.1.30](#)



[ELYGM:2012.1.31](#)



[ELYGM:2012.1.32](#)



[ELYGM:2012.1.33](#)



[ELYGM:2012.1.34](#)



[ELYGM:2012.1.35](#)



[ELYGM:2012.1.36](#)



[ELYGM:2012.1.37](#)



[ELYGM:2012.1.38](#)



[ELYGM:2012.1.39](#)



[ELYGM:2012.1.40](#)



[ELYGM:2012.1.41](#)



[ELYGM:2012.1.42](#)



[ELYGM:2012.1.43](#)



[ELYGM:2012.1.44](#)



[ELYGM:2012.1.46](#)





Design for St George and Archangel Michael window

