



## Design for window in Southburgh church

**Brief description:** Design by Leonard Walker for St. Andrews Church, Southburgh, Norfolk.

Appears to be an early design for a south aisle window in Southburgh, Norfolk. The window depicts St. Joseph and the Angel, Christ & St. Thomas and Dorcas. These subjects represent Hope (Joseph), Faith (St. Thomas) and Charity (Dorcas). There are 3 main lights and 10 upper lights. The design is signed by Leonard Walker. Main difference to the final window is the design of right light and the inclusion of decorative detail to the top of the central light. The back of the design includes two pencil sketches of children's heads drawn above the return details. Part of window inscription read from photograph 2012.1.15. St. Joseph and Christ text enclosed either side by circles with dots within. Dorcas text enclosed with decorative detailing. Top of left light ST JOSEPH AND THE ANGEL, top of centre light CHRIST & ST. THOMAS, top of right light DORCAS. Running across bottom of the 3 main lights. Forward slash indicates break in text. TO.THE.MEMORY.OF. / ANTHONY.EAGLING.d-FEB-1929.AGED.79. / ANTHONY.EAGLING.d-AUG-1816-AGED.17. / THOMAS.EAGLING.d-DEC-1897.AGED.84. / SARAH.EAGLING.d-DEC-1862.AGED.88. / SUSANNA.EAGLING.d-DEC-1887.AGED.72.

**Object type:** design

**Number of objects:** 1

**Production date:** 1935

**Production period:** 20th century, early

**Designer:** Leonard Walker

**Manufacturer:** Walker, Leonard 1877=1964

**Dimensions:** Height: 324 mm, Width: 186 mm

**Inscription:** fountain-pen note back of design (central) This drawing to be returned to Leonard Walker R. L. Studio 151A King Henrys Road NW3. pencil drawings back of design (top) two pencil sketches of children's faces. pencil note back of design (bottom) ? Southburgh. Norfolk

**Original location:** South window St. Andrews Church Southburgh Norfolk England

**Acquisition:** gift 25.11.2010

**Acquisition source:** Walker, Renton M.

**Bibliographical references:** Flickr Southburgh / Johnevigar

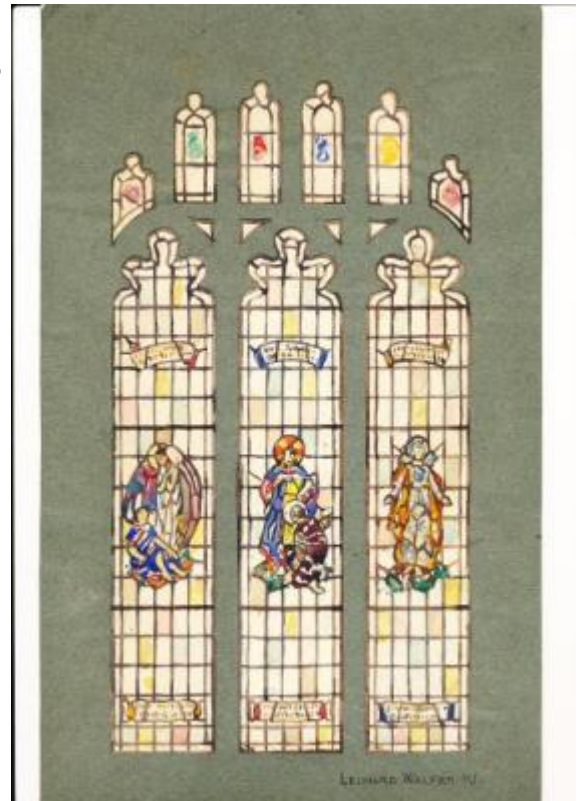
This item is not currently on display and can only be viewed by prior arrangement

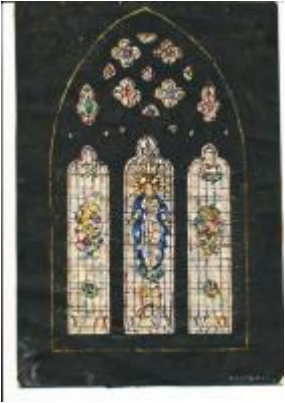
**Accession number:** ELYGM:2012.1.3

**Permalink:** <https://stainedglassmuseum.com/object/ELYGM:2012.1.3>

### Related objects

[ELYGM:2012.1.1](#)

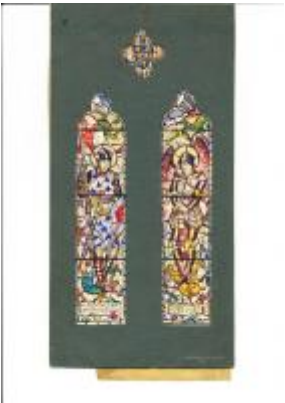




[ELYGM:2012.1.2](#)



[ELYGM:2012.1.4](#)



[ELYGM:2012.1.5](#)





[ELYGM:2012.1.6](#)



[ELYGM:2012.1.7](#)



[ELYGM:2012.1.8](#)



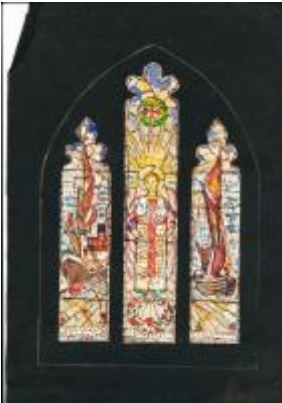
[ELYGM:2012.1.9](#)



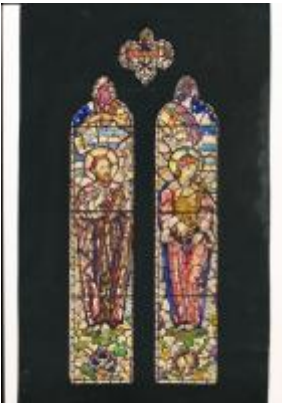
[ELYGM:2012.1.10](#)



[ELYGM:2012.1.11](#)



[ELYGM:2012.1.12](#)



[ELYGM:2012.1.13](#)





[ELYGM:2012.1.14](#)



[ELYGM:2012.1.15](#)

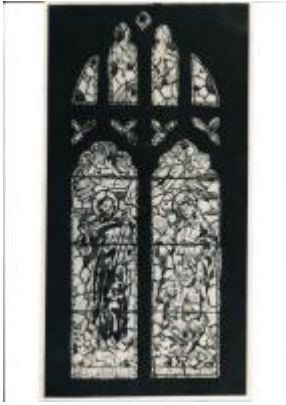


[ELYGM:2012.1.16](#)



[ELYGM:2012.1.17](#)





[ELYGM:2012.1.18](#)



[ELYGM:2012.1.19](#)



[ELYGM:2012.1.20](#)





[ELYGM:2012.1.21](#)



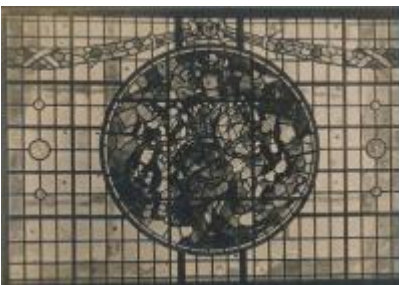
[ELYGM:2012.1.22](#)



[ELYGM:2012.1.23](#)



[ELYGM:2012.1.24](#)



[ELYGM:2012.1.25](#)



[ELYGM:2012.1.26](#)



[ELYGM:2012.1.27](#)



[ELYGM:2012.1.28](#)







[ELYGM:2012.1.29](#)



[ELYGM:2012.1.30](#)



[ELYGM:2012.1.31](#)



[ELYGM:2012.1.32](#)



[ELYGM:2012.1.33](#)



[ELYGM:2012.1.34](#)



[ELYGM:2012.1.35](#)



[ELYGM:2012.1.36](#)



[ELYGM:2012.1.37](#)



[ELYGM:2012.1.38](#)



[ELYGM:2012.1.39](#)



[ELYGM:2012.1.40](#)



[ELYGM:2012.1.41](#)



[ELYGM:2012.1.42](#)



[ELYGM:2012.1.43](#)



[ELYGM:2012.1.44](#)



[ELYGM:2012.1.46](#)







Design for window in Southburgh church

