



Photograph of window depicting St Elizabeth of Hungary and St Eloy of Noyon

Brief description: Black and white photograph of 2 lights by Leonard Walker depicting St Elizabeth of Hungary and St Eloy of Noyon.

Black and white photograph of 2 lights depicting St Elizabeth of Hungary and St Eloy of Noyon. The design has not been traced. From the similarity of design it is possible that this has a connection to ELYGM:2012.1.25.

Object type: photograph

Number of objects: 1

Production date: 1

Production period: 20th century

Designer: Leonard Walker

Manufacturer: Henry Dixon & Son

Dimensions: Height: 260 mm, Width: 173 mm

Inscription: business stamp back of photograph (bottom) HENRY DIXON & SON PHOTOGRAPHERS 12 ALBANY STREET LONDON N.W. Neg No 71211 Order No 8318 pencilled note back of photograph (central) with a 495 part of window bottom of left light SAINT.ELIZABETH.OF.HUNGARY part of window far bottom of left light IN MEMORY OF EDWIN.WOODALL.PARKER part of window bottom of right light SAINT.ELOY.OF NOYON part of window far bottom of right light LEONARD WALKER R.I STUDIO 151A KING HENRY'S ROAD.LONDON

Acquisition: gift 25.11.2010

Acquisition source: Walker, Renton M.

This item is not currently on display and can only be viewed by prior arrangement

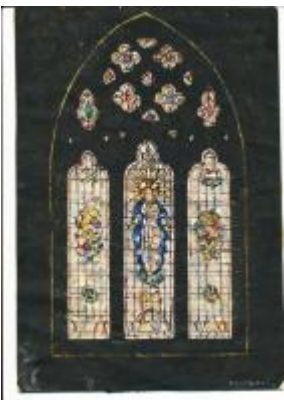
Accession number: ELYGM:2012.1.26

Permalink: <https://stainedglassmuseum.com/object/ELYGM:2012.1.26>



Related objects

[ELYGM:2012.1.1](#)



[ELYGM:2012.1.2](#)



[ELYGM:2012.1.3](#)



[ELYGM:2012.1.4](#)



[ELYGM:2012.1.5](#)





[ELYGM:2012.1.6](#)



[ELYGM:2012.1.7](#)



[ELYGM:2012.1.8](#)



[ELYGM:2012.1.9](#)



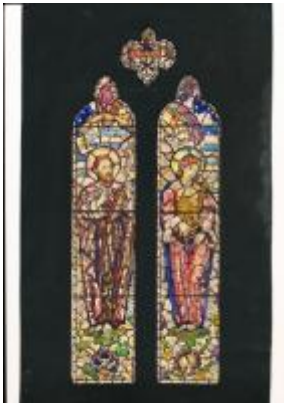
[ELYGM:2012.1.10](#)



[ELYGM:2012.1.11](#)



[ELYGM:2012.1.12](#)



[ELYGM:2012.1.13](#)





[ELYGM:2012.1.14](#)



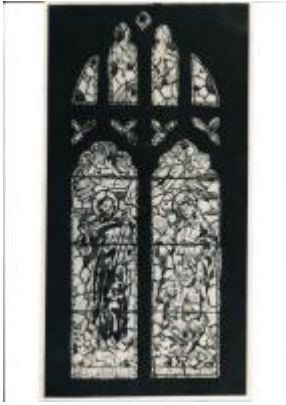
[ELYGM:2012.1.15](#)



[ELYGM:2012.1.16](#)



[ELYGM:2012.1.17](#)



[ELYGM:2012.1.18](#)



[ELYGM:2012.1.19](#)



[ELYGM:2012.1.20](#)





[ELYGM:2012.1.21](#)



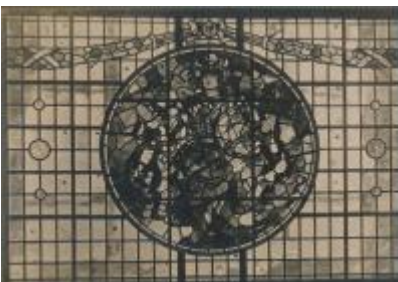
[ELYGM:2012.1.22](#)



[ELYGM:2012.1.23](#)



[ELYGM:2012.1.24](#)



[ELYGM:2012.1.25](#)



[ELYGM:2012.1.27](#)



[ELYGM:2012.1.28](#)



[ELYGM:2012.1.29](#)





[ELYGM:2012.1.30](#)



[ELYGM:2012.1.31](#)



[ELYGM:2012.1.32](#)



[ELYGM:2012.1.33](#)



[ELYGM:2012.1.34](#)



[ELYGM:2012.1.35](#)



[ELYGM:2012.1.36](#)



[ELYGM:2012.1.37](#)



[ELYGM:2012.1.38](#)



[ELYGM:2012.1.39](#)



[ELYGM:2012.1.40](#)



[ELYGM:2012.1.41](#)



[ELYGM:2012.1.42](#)



[ELYGM:2012.1.43](#)



[ELYGM:2012.1.44](#)



[ELYGM:2012.1.46](#)





Photograph of window depicting St Elizabeth of Hungary and St Eloy of Noyon

