



The Crucifixion

Brief description: Stained glass three light window made up of three lights. The window depicts the crucifixion, one light is the Virgin Mary, the next light shows Christ on the cross with Mary Magdalene below and the third is Saint John. Made by Heaton, Butler and Bayne in the 1870s.

Stained glass window made up of three lights. The window depicts the crucifixion, one light is the Virgin Mary, and the next is Christ on the cross with Mary Magdalene below and third is Saint John. Made by Heaton, Butler and Bayne in the 1870's. Heaton, Butler and Bayne formed in 1855 and had an enormous output of stained glass windows across the world. This window is typical of Heaton, Butler and Bayne's designs during the second-half of the nineteenth century. The interlacing patterns in the background were used in several other windows. Mary Magdalene and St John can be seen in the outer lights. Both turn towards Christ in attitudes of mourning.

Object type: window

Number of objects: 10

Production date: circa 1870-1879

Production period: 19th century, late

Manufacturer: Heaton, Butler and Bayne 1855=1953

Dimensions: Height: 3260 mm, Width: 580 mm

Inscription: top of panel ELYGM.1987.3.1 ST MARY B.V. bottom of panel ELYGM.1987.3.1 IN MEMORIAM JOHANNIS ROBE IN ChRISTO XXVIII DIE JVLII top of panel ELYGM.1987.3.2 IT IS FINISHED bottom of panel ELYGM.1987.3.2 SPARKES AB ALUMNI COLL DIV MDCCCLXIX AETATIS SUA XXII top of panel ELYGM.1987.3.3 ST JOHN E.V bottom of panel ELYGM.1987.3.3 JOHAN CANTAB QVI OBDORMIVIT SODALI PROERPTO DESIDERATO CONSODALES

Original location: St John the Evangelist Ockley Guildford Surrey England east window St John the Evangelist

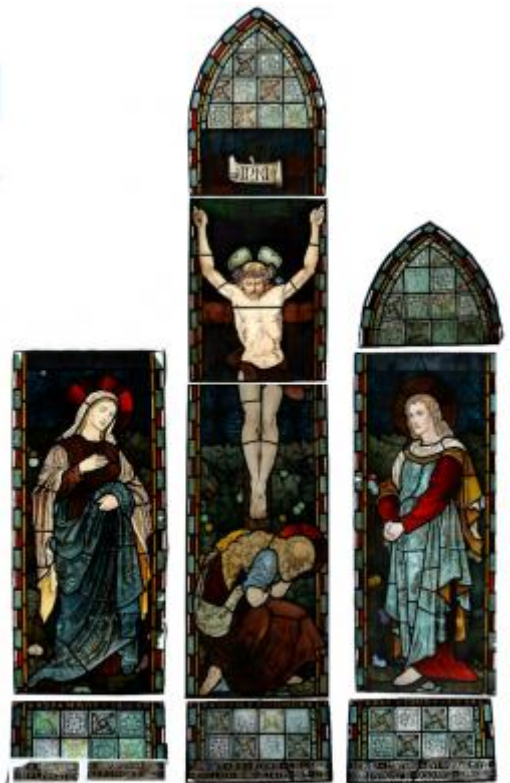
Acquisition: gift 6.1987

Acquisition source: Diocese of Guildford Diocesan House, Quarry Street, Guildford, Surrey

This item is only partly on display

Accession number: ELYGM:1987.3

Permalink: <https://stainedglassmuseum.com/object/ELYGM:1987.3>



Related objects

[ELYGM:1987.3.1](#)



[ELYGM:1987.3.2](#)



[ELYGM:1987.3.3](#)





The Crucifixion

