



## Arms of All Saints

**Brief description:** Stained glass quarrie from the top of a light. Composed of white rectangular multi lobed light made up off quarries of slab glass. Made by John Hayward, 1958

A stained glass panel made up of white rectangle quarries

**Object type:** light

**Number of objects:** 1

**Production date:** 1958

**Production period:** 20th century, mid

**Designer:** John Hayward

**Dimensions:** Height: 640 mm, Width: 970 mm

**Inscription:** base of ELYGM.1975.1.5 John Hayward 1958

**Original location:** All Saints' Grosvenor Road Pimlico London England east window All Saints' Church London

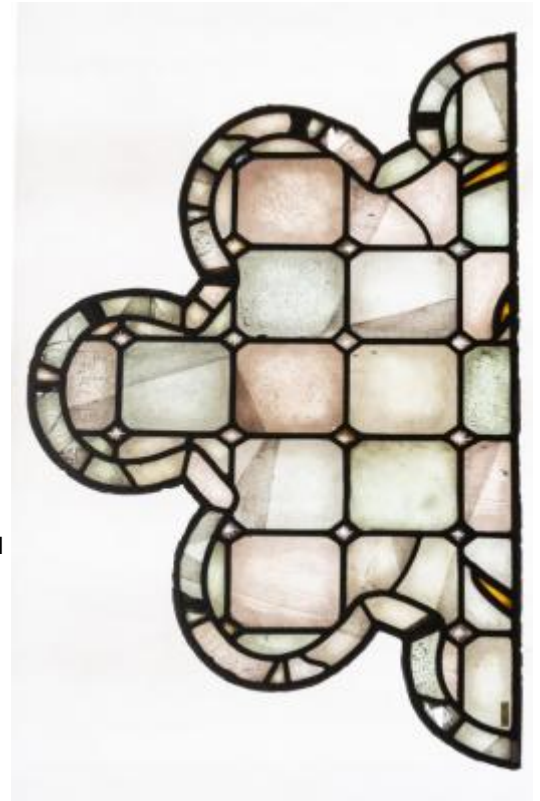
**Acquisition:** gift 1975

**Acquisition source:** Church Commissioners 1, Millbank, London, SW1P 3JZ

This item is not currently on display and can only be viewed by prior arrangement

**Accession number:** ELYGM:1975.1.5d

**Permalink:** <https://stainedglassmuseum.com/object/ELYGM:1975.1.5d>



### *Related objects*

[ELYGM:1975.1](#)



[ELYGM:1975.1.1](#)



[ELYGM:1975.1.1a](#)



[ELYGM:1975.1.1b](#)



[ELYGM:1975.1.1c](#)



[ELYGM:1975.1.1d](#)



[ELYGM:1975.1.2](#)



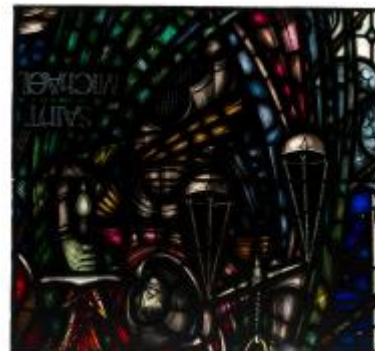
[ELYGM:1975.1.2a](#)



[ELYGM:1975.1.2b](#)



[ELYGM:1975.1.2c](#)





[ELYGM:1975.1.2d](#)



[ELYGM:1975.1.2e](#)



[ELYGM:1975.1.3](#)

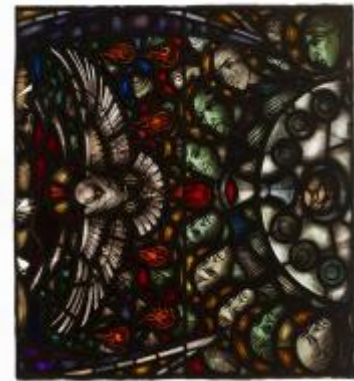


[ELYGM:1975.1.3a](#)





[ELYGM:1975.1.3b](#)



[ELYGM:1975.1.3c](#)



[ELYGM:1975.1.3d](#)

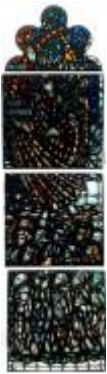




[ELYGM:1975.1.3e](#)



[ELYGM:1975.1.4](#)



[ELYGM:1975.1.4a](#)



[ELYGM:1975.1.4b](#)



[ELYGM:1975.1.4c](#)



[ELYGM:1975.1.4d](#)



[ELYGM:1975.1.4e](#)



[ELYGM:1975.1.5](#)



[ELYGM:1975.1.5a](#)



[ELYGM:1975.1.5b](#)



[ELYGM:1975.1.5c](#)







Arms of All Saints

