



## Arms of All Saints

**Brief description:** Stained glass light made up of four panels. Showing two angels supporting coat of arms of All Saints' Church, Pimlico. Made by John Hayward, 1958

Stained glass light showing 2 angels at top with long pointed wings and robes with tasselled belts, supporting coat of arms with crown and crossed ears of corn. Majority of light composed of white rectangle quarries of slab glass.

**Object type:** light

**Number of objects:** 4

**Production date:** 1958

**Production period:** 20th century, mid

**Designer:** John Hayward

**Dimensions:** Height: 3320 mm, Width: 970 mm

**Inscription:** panel 1a John Hayward 1958 on shield SANCTUS SANCTUS SANCTUS

**Acquisition:** gift 1975

**Acquisition source:** Church Commissioners 1, Millbank, London, SW1P 3JZ

This item is not currently on display and can only be viewed by prior arrangement

**Accession number:** ELYGM:1975.1.5

**Permalink:** <https://stainedglassmuseum.com/object/ELYGM:1975.1.5>



### *Related objects*

[ELYGM:1975.1](#)



[ELYGM:1975.1.1](#)



[ELYGM:1975.1.1a](#)



[ELYGM:1975.1.1b](#)



[ELYGM:1975.1.1c](#)



[ELYGM:1975.1.1d](#)



[ELYGM:1975.1.2](#)



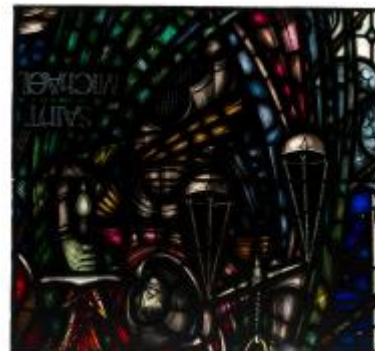
[ELYGM:1975.1.2a](#)



[ELYGM:1975.1.2b](#)



[ELYGM:1975.1.2c](#)





[ELYGM:1975.1.2d](#)



[ELYGM:1975.1.2e](#)



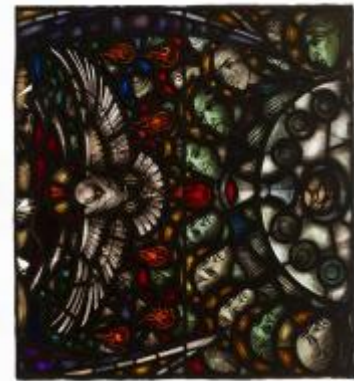
[ELYGM:1975.1.3](#)



[ELYGM:1975.1.3a](#)



[ELYGM:1975.1.3b](#)



[ELYGM:1975.1.3c](#)



[ELYGM:1975.1.3d](#)



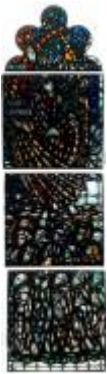




[ELYGM:1975.1.3e](#)



[ELYGM:1975.1.4](#)



[ELYGM:1975.1.4a](#)



[ELYGM:1975.1.4b](#)



[ELYGM:1975.1.4c](#)



[ELYGM:1975.1.4d](#)



[ELYGM:1975.1.4e](#)



[ELYGM:1975.1.5a](#)



[ELYGM:1975.1.5b](#)



[ELYGM:1975.1.5c](#)



[ELYGM:1975.1.5d](#)







Arms of All Saints

