



## St Gabriel and Saints

**Brief description:** Stained glass panel from base, showing a tier of saints, churchmen and kings. Made by John Hayward, 1958

Colourful panel showing a tier of churchmen, kings and saints

**Object type:** panel

**Number of objects:** 1

**Production date:** 1958

**Production period:** 20th century, mid

**Designer:** John Hayward

**Dimensions:** Height: 895 mm, Width: 965 mm

**Inscription:** panel 4d THE HAND OF GOD

**Original location:** All Saints' Grosvenor Road Pimlico London  
England East Window All Saints' Church London

**Acquisition:** gift 1975

**Acquisition source:** Church Commissioners 1, Millbank,  
London, SW1P 3JZ

This item is not currently on display and can only be viewed by prior arrangement

**Accession number:** ELYGM:1975.1.4a

**Permalink:**

<https://stainedglassmuseum.com/object/ELYGM:1975.1.4a>



### Related objects

[ELYGM:1975.1](#)



[ELYGM:1975.1.1](#)



[ELYGM:1975.1.1a](#)



[ELYGM:1975.1.1b](#)



[ELYGM:1975.1.1c](#)



[ELYGM:1975.1.1d](#)



[ELYGM:1975.1.2](#)



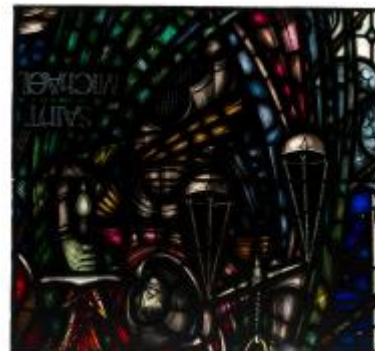
[ELYGM:1975.1.2a](#)



[ELYGM:1975.1.2b](#)



[ELYGM:1975.1.2c](#)





[ELYGM:1975.1.2d](#)



[ELYGM:1975.1.2e](#)



[ELYGM:1975.1.3](#)

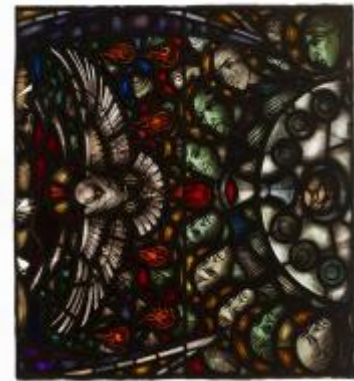


[ELYGM:1975.1.3a](#)





[ELYGM:1975.1.3b](#)



[ELYGM:1975.1.3c](#)



[ELYGM:1975.1.3d](#)

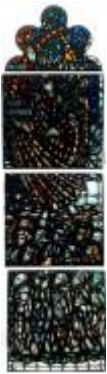




[ELYGM:1975.1.3e](#)



[ELYGM:1975.1.4](#)



[ELYGM:1975.1.4b](#)



[ELYGM:1975.1.4c](#)





[ELYGM:1975.1.4d](#)



[ELYGM:1975.1.4e](#)



[ELYGM:1975.1.5](#)



[ELYGM:1975.1.5a](#)



[ELYGM:1975.1.5b](#)



[ELYGM:1975.1.5c](#)



[ELYGM:1975.1.5d](#)







St Gabriel and Saints

