



## Photograph of Margaret Traherne

**Brief description:** Photo of Margaret Traherne in frame and mount. Signed 'Epia Croydon'.

Black and white mounted photograph of Margaret Traherne. Signed 'Epia Croydon'.

**Object type:** photograph

**Number of objects:** 1

**Production date:** 1

**Production period:** 20th century, late

**Designer:** Margaret Traherne

**Dimensions:** Height: 320 mm, Width: 268 mm

**Acquisition:** purchase 6.6.2024

**Acquisition source:** Brunsdon, Isobel

This item is not currently on display and can only be viewed by prior arrangement

**Accession number:** ELYGM:2024.21.3

**Permalink:**

<https://stainedglassmuseum.com/object/ELYGM:2024.21.3>



### *Related objects*

[ELYGM:2024.21.1](#)



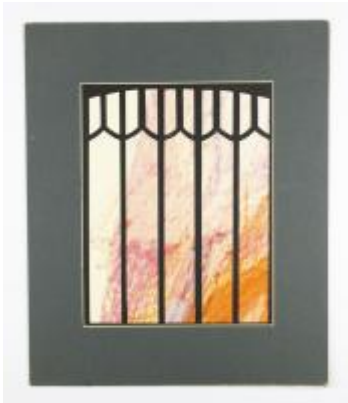
[ELYGM:2024.21.2](#)



[ELYGM:2024.21.4](#)



[ELYGM:2024.21.5](#)



[ELYGM:2024.21.6](#)



[ELYGM:2024.21.7](#)



[ELYGM:2024.21.8](#)



[ELYGM:2024.21.9](#)



[ELYGM:2024.21.10](#)



[ELYGM:2024.21.11](#)



[ELYGM:2024.21.12](#)





[ELYGM:2024.21.13](#)



[ELYGM:2024.21.14](#)



[ELYGM:2024.21.15](#)



[ELYGM:2024.21.16](#)



[ELYGM:2024.21.17](#)



[ELYGM:2024.21.18](#)



[ELYGM:2024.21.19](#)



[ELYGM:2024.21.20](#)



[ELYGM:2024.21.21](#)



[ELYGM:2024.21.22](#)



[ELYGM:2024.21.23](#)





Photograph of Margaret Traherne

