



## The Crucifixion

**Brief description:** Cartoon depicting Crucifixion, by Henry Holiday

This cartoon (a 1:1 scale preparatory drawing for a stained glass window) was drawn by Henry Holiday, when he was designing for the London studio Powell & Sons. Christ is shown at the centre of the composition, his arms outstretched on a cross. It is the moment that Christ has just died and so the sun and the moon are depicted. On either side two grieving angels kneel, their wings outstretched and heads buried in their cloaks. The window made from the cartoon has not been identified.

**Object type:** cartoon

**Number of objects:** 1

**Production date:** 1

**Production period:** 19th century, late

**Designer:** Henry Holiday

**Manufacturer:** Powell & Sons

**Dimensions:** Height: 801mm, Width: 647mm

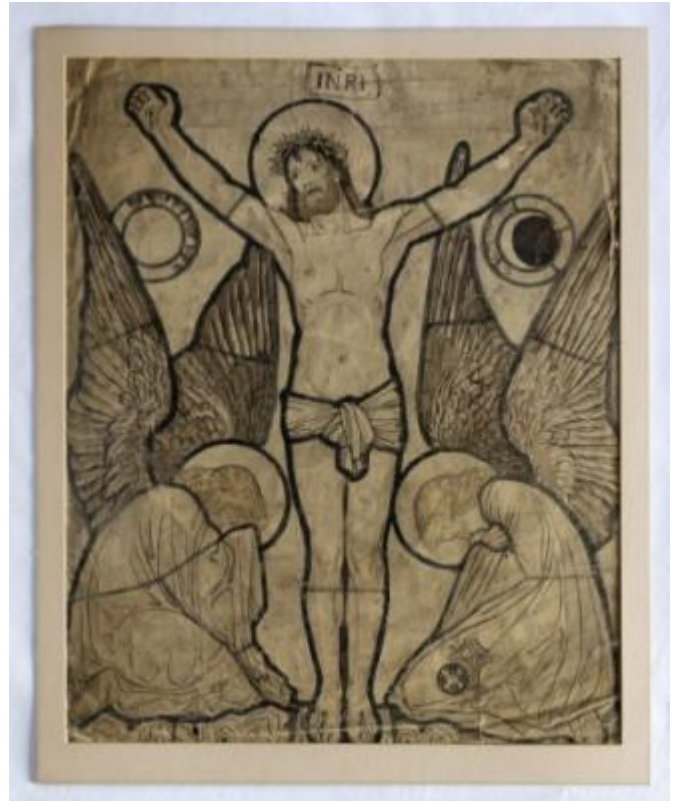
**Inscription:** Studio number reverse of cartoon 28

**Acquisition:** gift 11.9.2022

**Acquisition source:** Hadley, Joan

**Accession number:** ELYGM:2022.8.5

**Permalink:** <https://stainedglassmuseum.com/object/ELYGM:2022.8.5>



### *Related objects*

[ELYGM:2022.8.1](#)



[ELYGM:2022.8.2](#)



[ELYGM:2022.8.3](#)



[ELYGM:2022.8.4](#)





The Crucifixion

