



## fragment of a plain quarry

**Brief description:** fragment of a glass quarry from the box of glass fragments from J.W. Knowles studio

**Object type:** fragment

**Number of objects:** 1

**Production date:** 1

**Production period:** 15th century

**Dimensions:** Height: 80 mm, Width: 90 mm

**Inscription:** Thomas Peacock

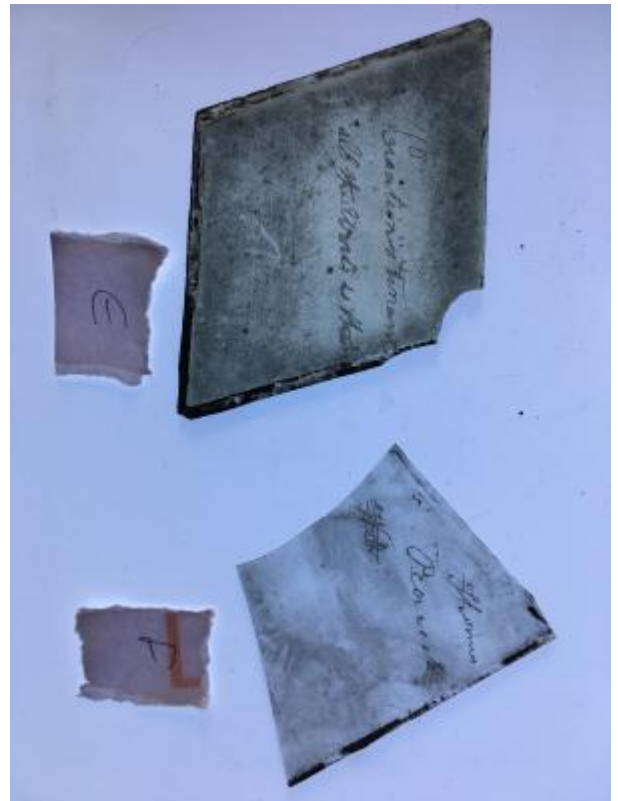
**Acquisition:** gift 12.2018

**Acquisition source:** Murray, J.

This item is not currently on display and can only be viewed by prior arrangement

**Accession number:** ELYGM:2018.4.16f

**Permalink:** <https://stainedglassmuseum.com/object/ELYGM:2018.4.16f>



### Related objects

[ELYGM:2018.4.1](#)



[ELYGM:2018.4.2](#)



[ELYGM:2018.4.3](#)



[ELYGM:2018.4.4](#)



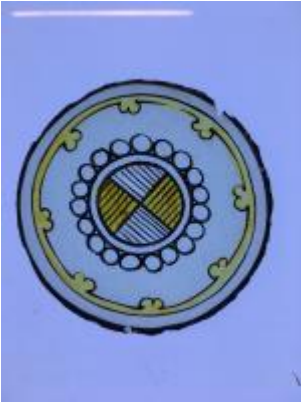
[ELYGM:2018.4.5](#)



[ELYGM:2018.4.6](#)



[ELYGM:2018.4.7](#)



[ELYGM:2018.4.8](#)



[ELYGM:2018.4.9a](#)



[ELYGM:2018.4.9b](#)





[ELYGM:2018.4.9c](#)



[ELYGM:2018.4.9d](#)



[ELYGM:2018.4.9e](#)



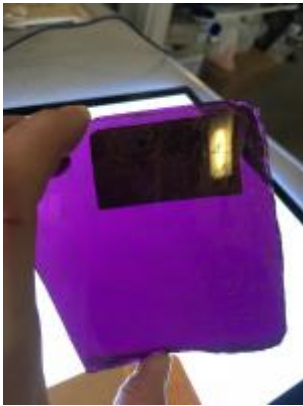
[ELYGM:2018.4.9f](#)



[ELYGM:2018.4.9g](#)



[ELYGM:2018.4.9h](#)



[ELYGM:2018.4.9i](#)





[ELYGM:2018.4.9j](#)



[ELYGM:2018.4.10](#)



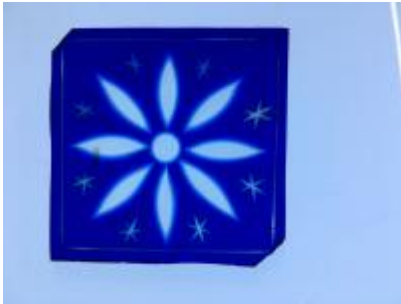
[ELYGM:2018.4.11](#)



[ELYGM:2018.4.12](#)



[ELYGM:2018.4.13](#)



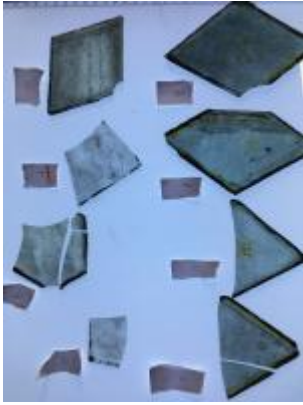
[ELYGM:2018.4.14](#)



[ELYGM:2018.4.15](#)



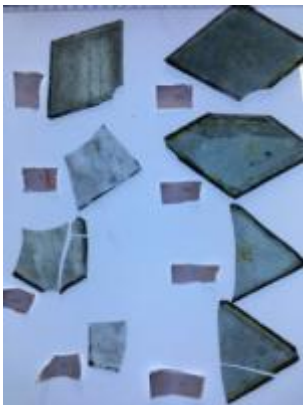
[ELYGM:2018.4.16a](#)



[ELYGM:2018.4.16b](#)



[ELYGM:2018.4.16c](#)



[ELYGM:2018.4.16d](#)







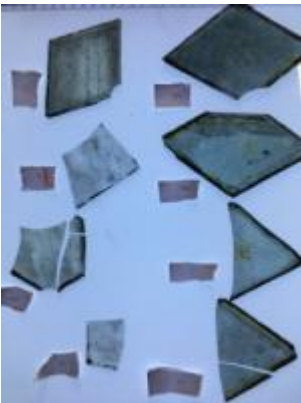
[ELYGM:2018.4.16e](#)



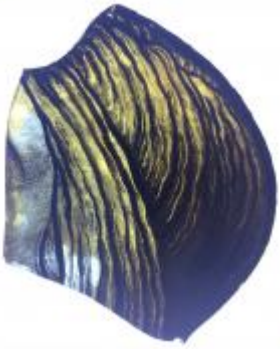
[ELYGM:2018.4.16g](#)



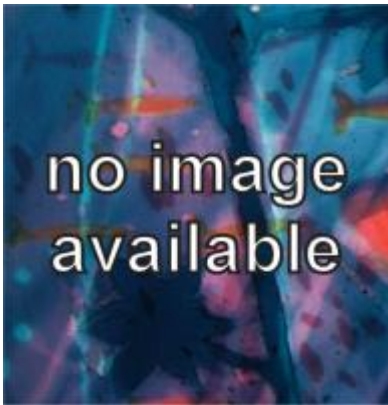
[ELYGM:2018.4.16h](#)



[ELYGM:2018.4.17](#)



[ELYGM:2018.4.18](#)



[ELYGM:2018.4.19](#)



[ELYGM:2018.4.20](#)





[ELYGM:2018.4.21](#)



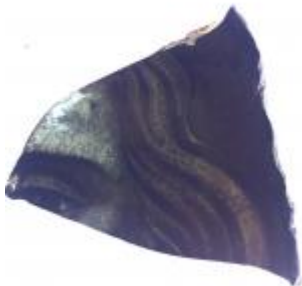
[ELYGM:2018.4.22](#)



[ELYGM:2018.4.23](#)



[ELYGM:2018.4.24](#)



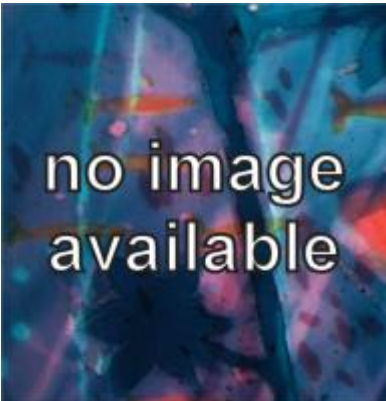
[ELYGM:2018.4.25](#)



[ELYGM:2018.4.26](#)



[ELYGM:2018.4.27](#)



[ELYGM:2018.4.28](#)





[ELYGM:2018.4.29](#)



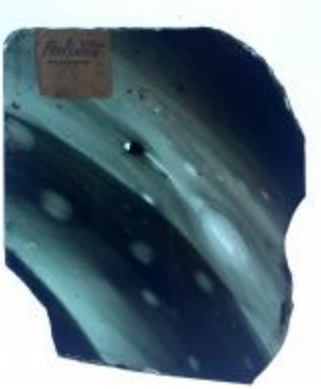
[ELYGM:2018.4.30](#)



[ELYGM:2018.4.31](#)



[ELYGM:2018.4.32](#)



[ELYGM:2018.4.33](#)



[ELYGM:2018.4.34](#)

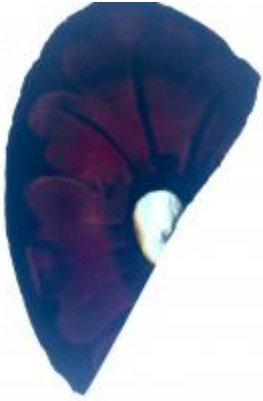


[ELYGM:2018.4.35](#)

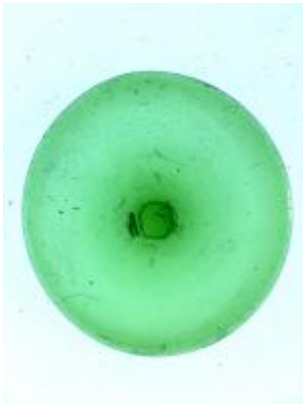




[ELYGM:2018.4.36](#)



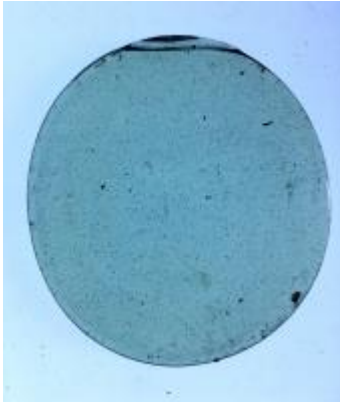
[ELYGM:2018.4.37](#)



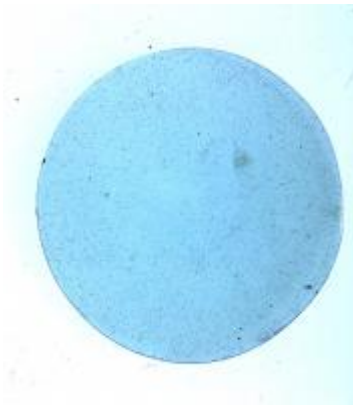
[ELYGM:2018.4.38](#)



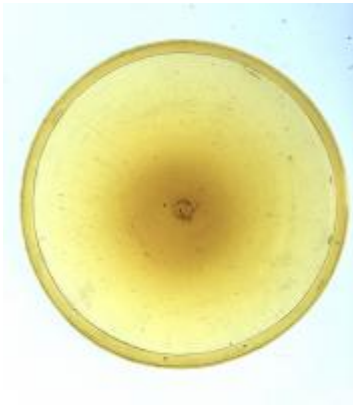
[ELYGM:2018.4.39](#)



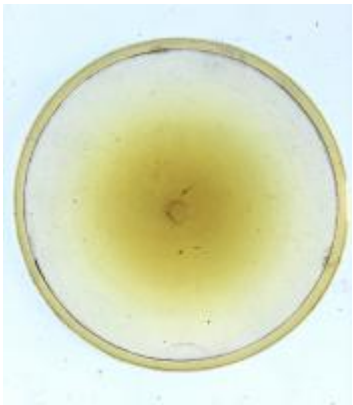
[ELYGM:2018.4.40](#)



[ELYGM:2018.4.41](#)



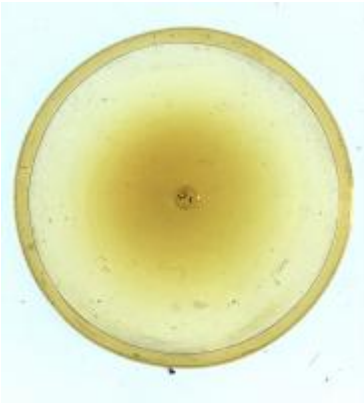
[ELYGM:2018.4.42](#)



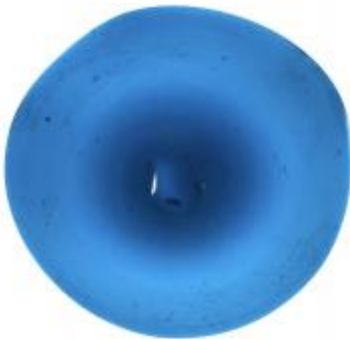




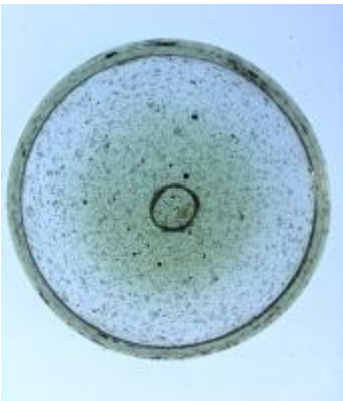
[ELYGM:2018.4.43](#)



[ELYGM:2018.4.44](#)



[ELYGM:2018.4.45](#)



[ELYGM:2018.4.46](#)



[ELYGM:2018.4.47](#)



[ELYGM:2018.4.48](#)



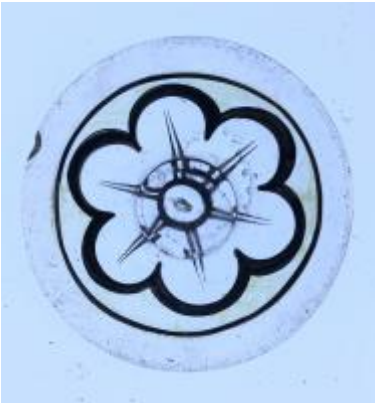
[ELYGM:2018.4.49](#)



[ELYGM:2018.4.50](#)



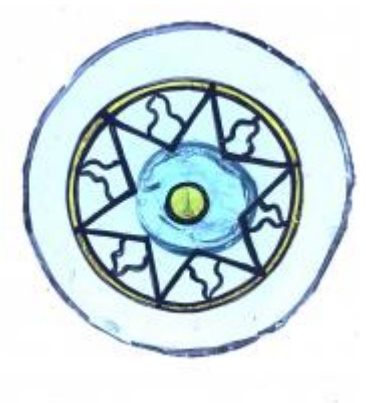
[ELYGM:2018.4.51](#)



[ELYGM:2018.4.52](#)

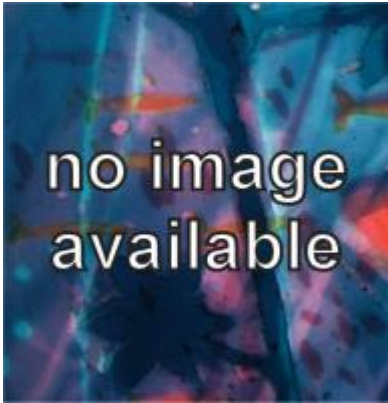


[ELYGM:2018.4.53](#)

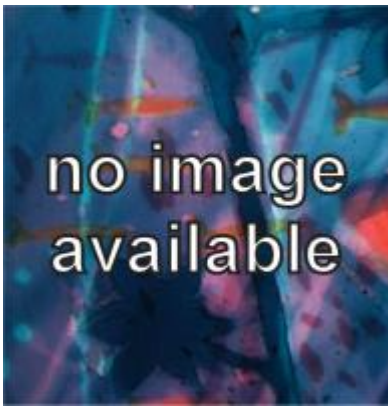




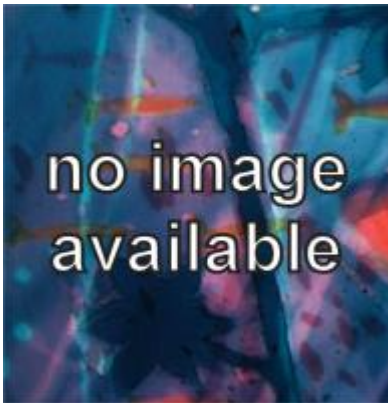
[ELYGM:2018.4.54](#)



[ELYGM:2018.4.55](#)



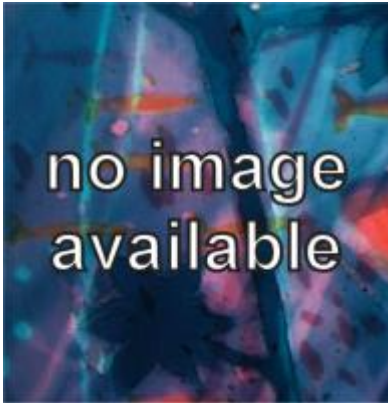
[ELYGM:2018.4.56](#)



[ELYGM:2018.4.57](#)



[ELYGM:2018.4.58](#)



[ELYGM:2018.4.59](#)



[ELYGM:2018.4.60](#)

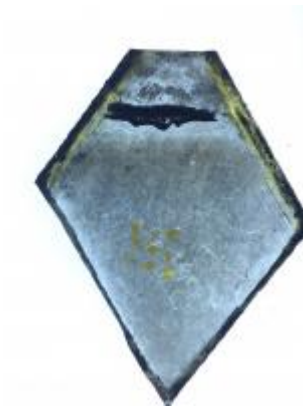




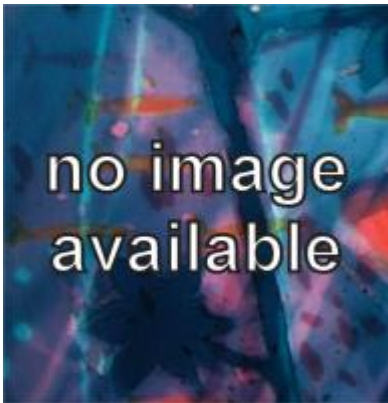
[ELYGM:2018.4.61](#)



[ELYGM:2018.4.62](#)



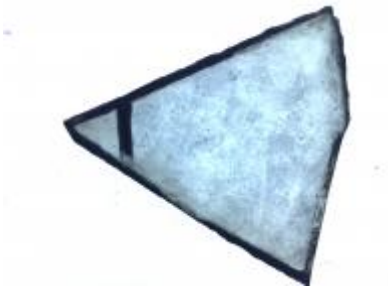
[ELYGM:2018.4.63](#)



[ELYGM:2018.4.64](#)



[ELYGM:2018.4.65](#)



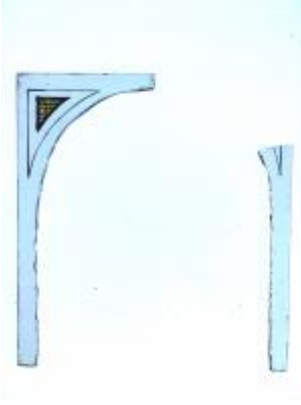
[ELYGM:2018.4.66](#)



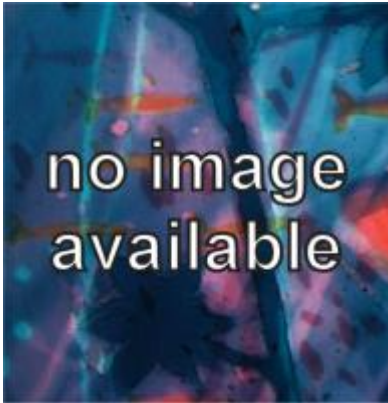
[ELYGM:2018.4.67](#)



[ELYGM:2018.4.68](#)



[ELYGM:2018.4.69](#)



[ELYGM:2018.4.70](#)







fragment of a plain quarry

