



Arms of Thomas More

Brief description: Heraldic panel. A shield depicting the arms of Sir Thomas More, Lord High Chancellor of England, who was executed on Tower Hill, London, on 6 July 1535.

Thomas More coat of arms which consists of shield divided into four. Quarterly: 1st and 4th, Argent a chevron engrailed between three moorcocks sable, crested Gules; 2nd and 3rd, Argent on a chevron between three unicorns' heads erased sable as many bezants. The moorcocks' combs and wattles are coloured red with enamel and the three bezants are yellowed with silver stain.

Object type: panel

Number of objects: 1

Production date: 1

Production period: 19th century

Dimensions: Height: 310 mm, Width: 243 mm

Acquisition: gift 2010

Acquisition source: Leach & Sons

This item is not currently on display and can only be viewed by prior arrangement

Accession number: ELYGM:2013.18.14

Permalink: <https://stainedglassmuseum.com/object/ELYGM:2013.18.14>



Related objects

[ELYGM:2013.18.1](#)



[ELYGM:2013.18.2](#)



[ELYGM:2013.18.3](#)



[ELYGM:2013.18.4](#)



[ELYGM:2013.18.5](#)



[ELYGM:2013.18.6](#)





[ELYGM:2013.18.7](#)



[ELYGM:2013.18.8](#)



[ELYGM:2013.18.9](#)



[ELYGM:2013.18.10](#)





[ELYGM:2013.18.11](#)



[ELYGM:2013.18.12](#)



[ELYGM:2013.18.13](#)



[ELYGM:2013.18.15](#)



[ELYGM:2013.18.16](#)



[ELYGM:2013.18.17](#)



[ELYGM:2013.18.18](#)



[ELYGM:2013.18.19](#)



[ELYGM:2013.18.20](#)



[ELYGM:2013.18.21](#)



[ELYGM:2013.18.22](#)



[ELYGM:2013.18.23](#)





[ELYGM:2013.18.24](#)



[ELYGM:2013.18.25](#)



[ELYGM:2013.18.26](#)



[ELYGM:2013.18.27](#)



[ELYGM:2013.18.28](#)



[ELYGM:2013.18.29](#)



[ELYGM:2013.18.30](#)



[ELYGM:2013.18.31](#)



[ELYGM:2013.18.32](#)



[ELYGM:2013.18.33](#)



[ELYGM:2013.18.34](#)



[ELYGM:2013.18.35](#)



[ELYGM:2013.18.36](#)



[ELYGM:2013.18.37](#)



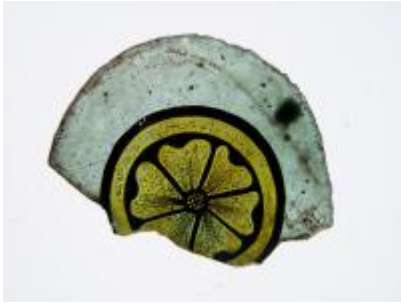
[ELYGM:2013.18.38](#)



[ELYGM:2013.18.39](#)



[ELYGM:2013.18.40](#)



[ELYGM:2013.18.41](#)



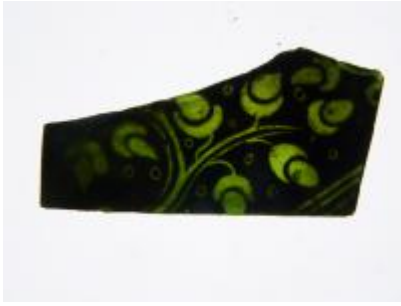
[ELYGM:2013.18.42](#)



[ELYGM:2013.18.43](#)



[ELYGM:2013.18.44](#)



[ELYGM:2013.18.45](#)



[ELYGM:2013.18.46](#)



[ELYGM:2013.18.47](#)



[ELYGM:2013.18.48](#)



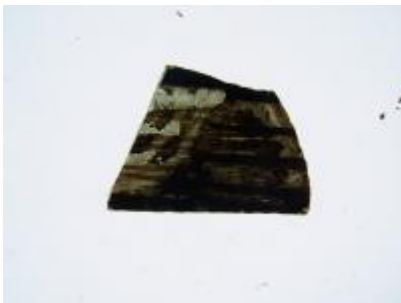
[ELYGM:2013.18.49](#)



[ELYGM:2013.18.50](#)



[ELYGM:2013.18.51](#)



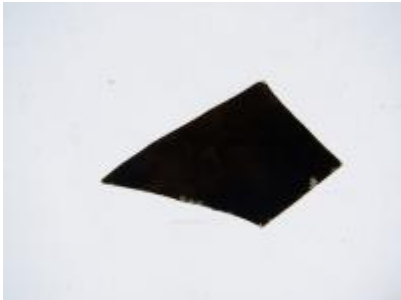
[ELYGM:2013.18.52](#)



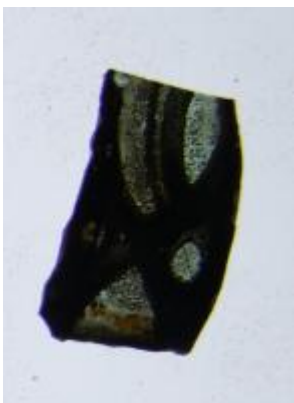
[ELYGM:2013.18.53](#)



[ELYGM:2013.18.54](#)



[ELYGM:2013.18.55](#)



[ELYGM:2013.18.56](#)



[ELYGM:2013.18.57](#)



[ELYGM:2013.18.59](#)



[ELYGM:2013.18.60](#)





Arms of Thomas More

