



## Design for Christ in Majesty window

**Brief description:** Design by Leonard Walker for the East window of All Saints Church, East Tuddenham and Honingham, Norfolk

Appears to be an early design for the East window at East Tuddenham and Honingham, Norfolk. There are three main lights each topped by two upper lights. Window depicts Christ in Majesty flanked by the figures of Faith & Hope. The main differences to final window is the design of the upper lights and the pose of the right hand figure. The design is signed by the designer Leonard Walker.

**Object type:** design

**Number of objects:** 1

**Production date:** 1950-1953

**Production period:** 20th century, mid

**Designer:** Leonard Walker

**Manufacturer:** Walker, Leonard 1877=1964

**Dimensions:** Height: 329 mm, Width: 252 mm

**Inscription:** fountain-pen note back of design (top) This design is the property of Leonard Walker Studio 151A King Henrys Road London NW3 To be returned pencil note Back of design (bottom) HONINGHAM Part of design Top of left light FAITH Part of design Top of right light HOPE

**Original location:** All Saints Church East Tuddenham Norfolk England

**Acquisition:** gift 25.11.2010

**Acquisition source:** Walker, Renton M.

**Bibliographical references:** Flickr East Tuddenham / Gary Troughton

This item is not currently on display and can only be viewed by prior arrangement

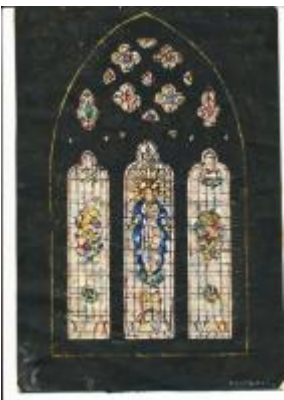
**Accession number:** ELYGM:2012.1.2

**Permalink:** <https://stainedglassmuseum.com/object/ELYGM:2012.1.2>



### Related objects

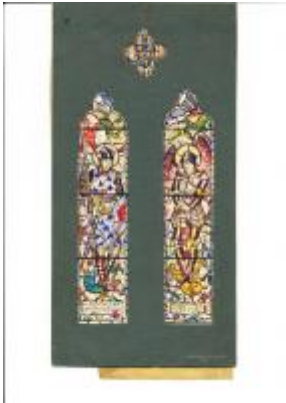
[ELYGM:2012.1.1](#)



[ELYGM:2012.1.3](#)



[ELYGM:2012.1.4](#)



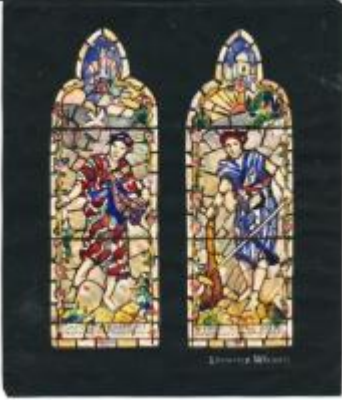
[ELYGM:2012.1.5](#)



[ELYGM:2012.1.6](#)



[ELYGM:2012.1.7](#)



[ELYGM:2012.1.8](#)



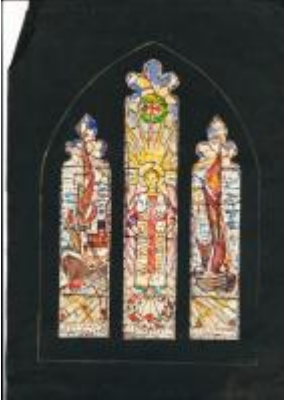
[ELYGM:2012.1.9](#)



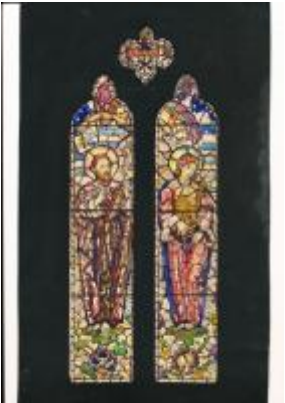
[ELYGM:2012.1.10](#)



[ELYGM:2012.1.11](#)



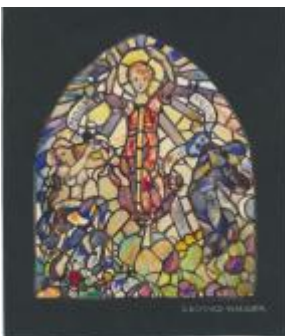
[ELYGM:2012.1.12](#)



[ELYGM:2012.1.13](#)



[ELYGM:2012.1.14](#)





[ELYGM:2012.1.15](#)



[ELYGM:2012.1.16](#)



[ELYGM:2012.1.17](#)



[ELYGM:2012.1.18](#)



[ELYGM:2012.1.19](#)



[ELYGM:2012.1.20](#)



[ELYGM:2012.1.21](#)





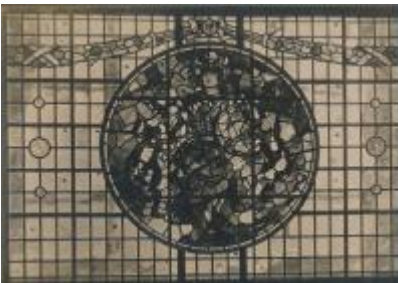
[ELYGM:2012.1.22](#)



[ELYGM:2012.1.23](#)



[ELYGM:2012.1.24](#)



[ELYGM:2012.1.25](#)



[ELYGM:2012.1.26](#)



[ELYGM:2012.1.27](#)



[ELYGM:2012.1.28](#)



[ELYGM:2012.1.29](#)





[ELYGM:2012.1.30](#)



[ELYGM:2012.1.31](#)



[ELYGM:2012.1.32](#)



[ELYGM:2012.1.33](#)



[ELYGM:2012.1.34](#)



[ELYGM:2012.1.35](#)



[ELYGM:2012.1.36](#)



[ELYGM:2012.1.37](#)



[ELYGM:2012.1.38](#)



[ELYGM:2012.1.39](#)



[ELYGM:2012.1.40](#)



[ELYGM:2012.1.41](#)



[ELYGM:2012.1.42](#)



[ELYGM:2012.1.43](#)



[ELYGM:2012.1.44](#)



[ELYGM:2012.1.46](#)





Design for Christ in Majesty window

