



## Photograph of a window at Southburgh Church

**Brief description:** Black and white photograph of a window by Leonard Walker at St. Andrew's Church, Southburgh, Norfolk.

Photograph of a window at Southburgh, Norfolk consisting of 3 main lights and 10 upper lights. The museum also has in its collection Leonard Walker's design for this window.

**Object type:** photograph

**Number of objects:** 1

**Production date:** 1935

**Production period:** 20th century

**Designer:** Leonard Walker

**Manufacturer:** A.E. Coe & Sons Ltd.

**Dimensions:** Height: 249 mm, Width: 185 mm

**Inscription:** business stamp back of photograph (central) A.E. COE & SONS, LTD., PHOTOGRAPHS, 32, LONDON ST., & CASTLE MEADOW, NORWICH. TEL. NORWICH 91. WHEN RE-ORDERING PLEASE QUOTE NO:..... pencil note on back of photograph Southburgh; Norfolk Part of window read from photograph. St. Joseph text enclosed either side by circles with dots within. top of left light ST JOSEPH AND.THE.ANGEL Part of window read from photograph. Christ text enclosed either side by circles with dots within. top of centre light CHRIST &.ST.THOMAS Part of window read from photograph. Dorcas text enclosed with decorative detailing. top of right light DORCAS Part of window read from photograph. running across bottom of the 3 main lights. Forward slash indicates break in text. TO.THE.MEMORY.OF./ LOUISA.ELIZABETH.EAGLING.d-FEB-1929.AGED.79./ ANTHONY.EAGLING.d-AUG-1816-AGED.17./ THOMAS.EAGLING.d-DEC-1897.AGE D.84./ .SARAH.EAGLING.d-DEC-1862.AGED.88./ .SUSANNA.EAGLING.d-DEC.1907.AGED.93/ SARAH.ANN.EAGLING.d-DEC-1887.AGED.72.

**Acquisition:** gift 25.11.2010

**Acquisition source:** Walker, Renton M.

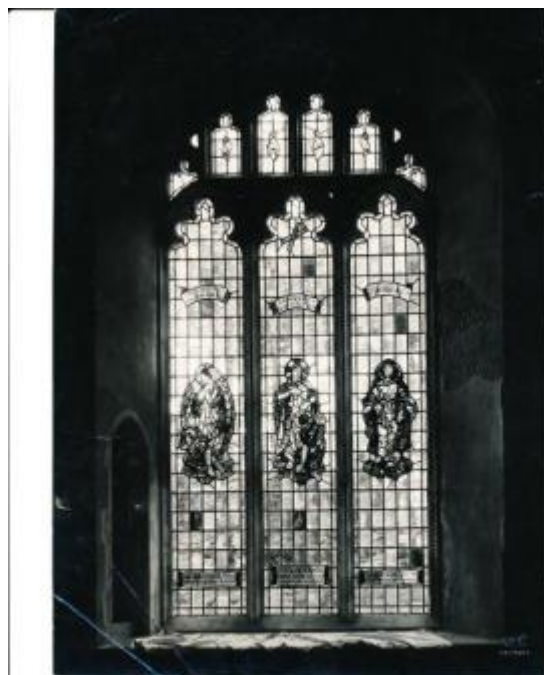
This item is not currently on display and can only be viewed by prior arrangement

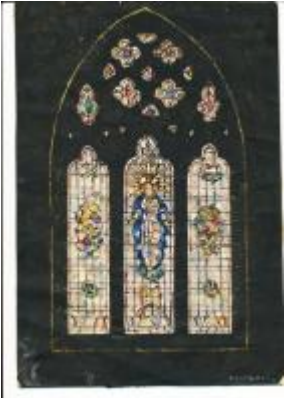
**Accession number:** ELYGM:2012.1.15

**Permalink:** <https://stainedglassmuseum.com/object/ELYGM:2012.1.15>

### Related objects

[ELYGM:2012.1.1](#)





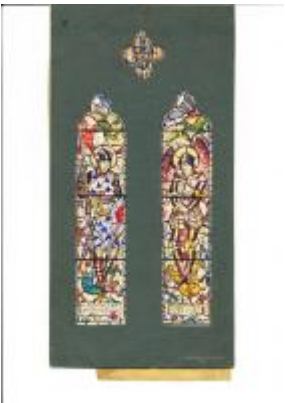
[ELYGM:2012.1.2](#)



[ELYGM:2012.1.3](#)



[ELYGM:2012.1.4](#)





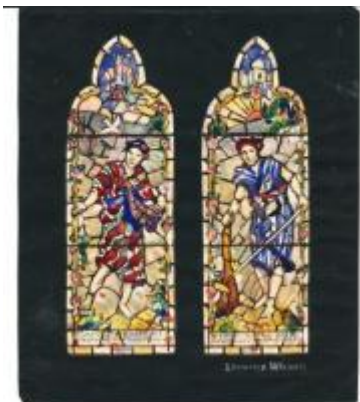
[ELYGM:2012.1.5](#)



[ELYGM:2012.1.6](#)



[ELYGM:2012.1.7](#)



[ELYGM:2012.1.8](#)



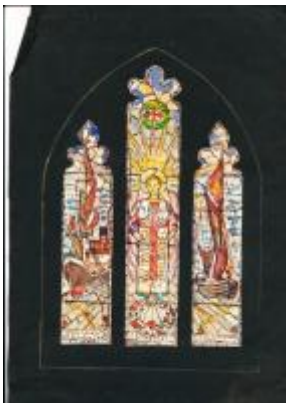
[ELYGM:2012.1.9](#)



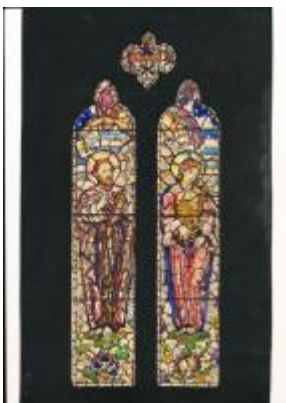
[ELYGM:2012.1.10](#)



[ELYGM:2012.1.11](#)



[ELYGM:2012.1.12](#)

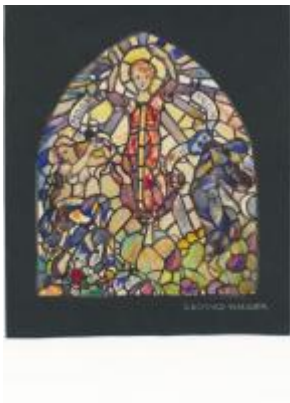




[ELYGM:2012.1.13](#)



[ELYGM:2012.1.14](#)



[ELYGM:2012.1.16](#)



[ELYGM:2012.1.17](#)



[ELYGM:2012.1.18](#)



[ELYGM:2012.1.19](#)



[ELYGM:2012.1.20](#)







[ELYGM:2012.1.21](#)



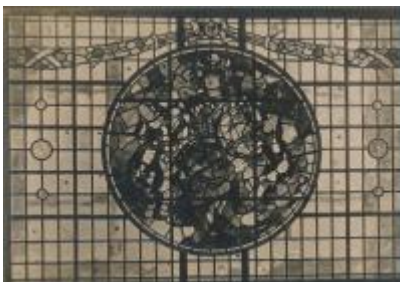
[ELYGM:2012.1.22](#)



[ELYGM:2012.1.23](#)



[ELYGM:2012.1.24](#)



[ELYGM:2012.1.25](#)



[ELYGM:2012.1.26](#)



[ELYGM:2012.1.27](#)



[ELYGM:2012.1.28](#)







[ELYGM:2012.1.29](#)



[ELYGM:2012.1.30](#)



[ELYGM:2012.1.31](#)



[ELYGM:2012.1.32](#)



[ELYGM:2012.1.33](#)



[ELYGM:2012.1.34](#)



[ELYGM:2012.1.35](#)



[ELYGM:2012.1.36](#)



[ELYGM:2012.1.37](#)



[ELYGM:2012.1.38](#)



[ELYGM:2012.1.39](#)



[ELYGM:2012.1.40](#)



[ELYGM:2012.1.41](#)



[ELYGM:2012.1.42](#)



[ELYGM:2012.1.43](#)



[ELYGM:2012.1.44](#)



[ELYGM:2012.1.46](#)







Photograph of a window at Southburgh Church

