



## Design for window depicting the Risen Christ

**Brief description:** Design by Leonard Walker for East window, St. Michael & All Angels Church, Geldeston, Norfolk

Design for the East window of St. Michael & All Angels Church, Geldeston, Norfolk. Window consisting of 3 main lights and 17 upper lights. The centre light depicts the Risen Christ above the bible. Draws together full imagery of Christ Crucified, Christ on the Eucharistic Altar and Christ Risen and gloriously reigning. Signed by the designer Leonard Walker with three assistants names: R. Pearce, E.D. Crouch, W. Malton in right light centre bottom. Window inscription read from Flickr photograph: TO THE GLORY OF GOD THIS WINDOW IS / (illegible inscription) / GIFTS IN NATURE PRAISE . BE TO THEE

**Object type:** design

**Number of objects:** 1

**Production date:** 1957

**Production period:** 20th century, mid

**Designer:** Leonard Walker

**Manufacturer:** Walker, Leonard 1877=1964

**Dimensions:** Height: 285 mm, Width: 200 mm

**Inscription:** fountain-pen note Back of design 'This design to be returned to Leonard Walker R.I. Studio 151/ A King Henry's Road London N.W.3.' and calculations '11-1-0' '6-4-6' = '17-5-6' (costings?)

**Original location:** East window St. Michael & All Angels Church Road Braydeston Norfolk England

**Acquisition:** gift 25.11.2010

**Acquisition source:** Walker, Renton M.

**Bibliographical references:** Flickr St. Michael & All Angels

This item is not currently on display and can only be viewed by prior arrangement

**Accession number:** ELYGM:2012.1.1

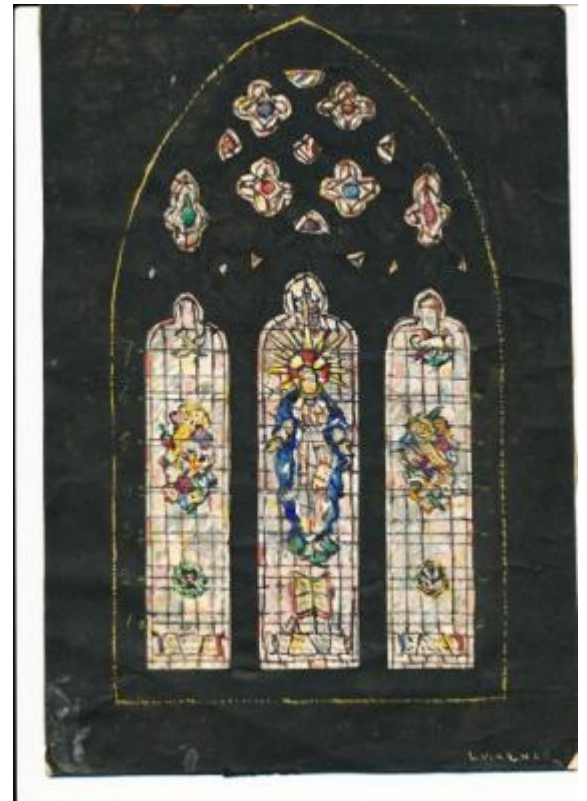
**Permalink:** <https://stainedglassmuseum.com/object/ELYGM:2012.1.1>

### Related objects

[ELYGM:2012.1.2](#)

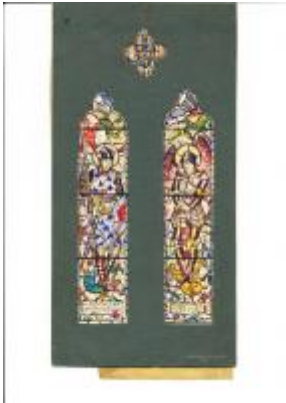


[ELYGM:2012.1.3](#)





[ELYGM:2012.1.4](#)



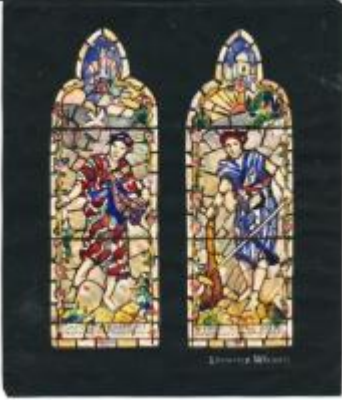
[ELYGM:2012.1.5](#)



[ELYGM:2012.1.6](#)



[ELYGM:2012.1.7](#)



[ELYGM:2012.1.8](#)



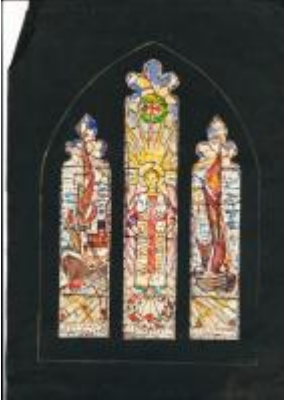
[ELYGM:2012.1.9](#)



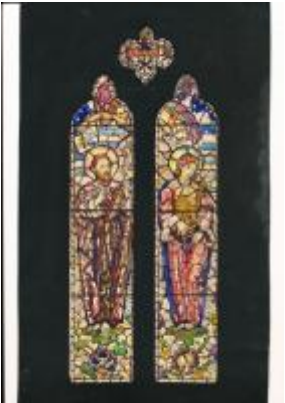
[ELYGM:2012.1.10](#)



[ELYGM:2012.1.11](#)



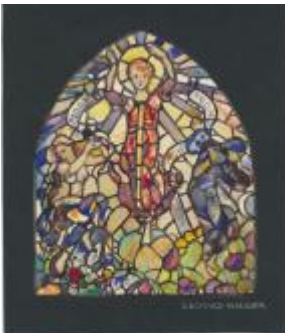
[ELYGM:2012.1.12](#)



[ELYGM:2012.1.13](#)



[ELYGM:2012.1.14](#)





[ELYGM:2012.1.15](#)



[ELYGM:2012.1.16](#)



[ELYGM:2012.1.17](#)



[ELYGM:2012.1.18](#)



[ELYGM:2012.1.19](#)



[ELYGM:2012.1.20](#)



[ELYGM:2012.1.21](#)





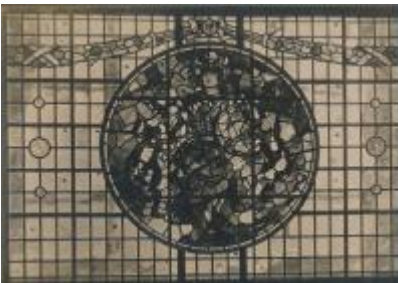
[ELYGM:2012.1.22](#)



[ELYGM:2012.1.23](#)



[ELYGM:2012.1.24](#)



[ELYGM:2012.1.25](#)



[ELYGM:2012.1.26](#)



[ELYGM:2012.1.27](#)



[ELYGM:2012.1.28](#)



[ELYGM:2012.1.29](#)





[ELYGM:2012.1.30](#)



[ELYGM:2012.1.31](#)



[ELYGM:2012.1.32](#)



[ELYGM:2012.1.33](#)



[ELYGM:2012.1.34](#)



[ELYGM:2012.1.35](#)



[ELYGM:2012.1.36](#)



[ELYGM:2012.1.37](#)



[ELYGM:2012.1.38](#)



[ELYGM:2012.1.39](#)



[ELYGM:2012.1.40](#)



[ELYGM:2012.1.41](#)



[ELYGM:2012.1.42](#)



[ELYGM:2012.1.43](#)



[ELYGM:2012.1.44](#)



[ELYGM:2012.1.46](#)





Design for window depicting the Risen Christ

