



Crown Glass

Brief description: Crown glass with a blue swirl on clear glass.

Crown glass with a blue swirl on clear glass. A disc of mouth-blown glass. Pieces blown by this method are recognisable by the concentric striations that result from the spinning of the crown during its manufacture.

Object type: glass fragment

Number of objects: 1

Production date: 1

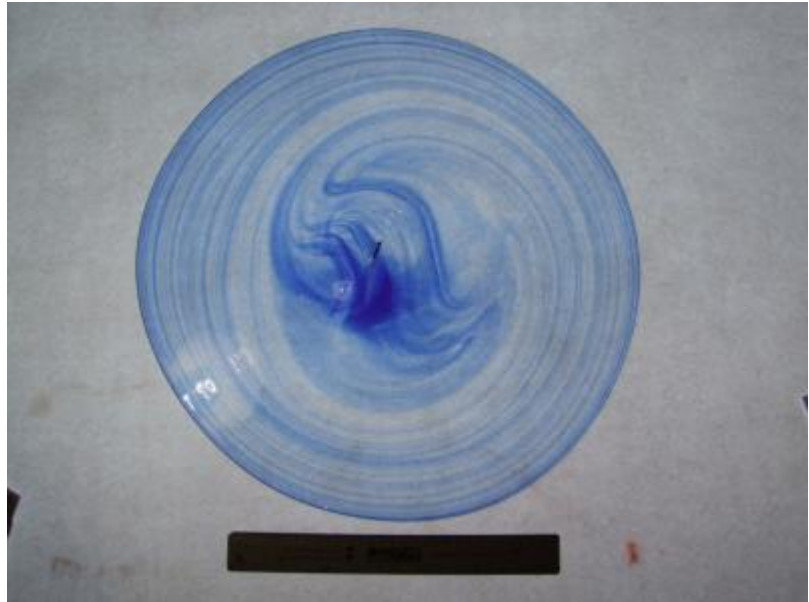
Acquisition: gift

Acquisition source: English Antique Glass

Accession number: ELYGM:2008.8.13

Permalink:

<https://stainedglassmuseum.com/object/ELYGM:2008.8.13>



Related objects

[ELYGM:2008.8.1](#)



[ELYGM:2008.8.2](#)

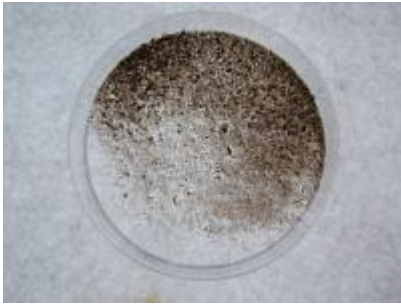


[ELYGM:2008.8.3](#)





[ELYGM:2008.8.4](#)



[ELYGM:2008.8.5](#)



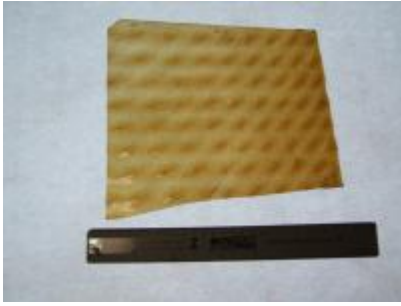
[ELYGM:2008.8.6](#)



[ELYGM:2008.8.7](#)



[ELYGM:2008.8.8](#)



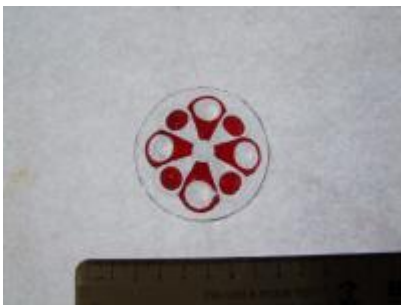
[ELYGM:2008.8.9](#)



[ELYGM:2008.8.10](#)



[ELYGM:2008.8.11](#)



[ELYGM:2008.8.12](#)



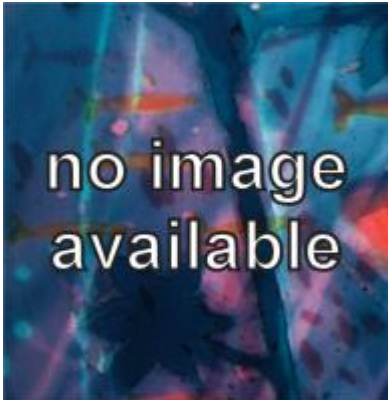
[ELYGM:2008.8.15](#)



[ELYGM:2008.8.16](#)



[ELYGM:2008.8.17](#)





Crown Glass

