



## Muff

**Brief description:** Muff glass, with an amber swirl pattern in the glass. There are noticeable air bubbles in the glass.

Muff glass with an amber swirl colour in the glass. A cylinder of blown glass, cut off at both ends then flattened to form a glass plate.

**Object type:** glass fragment

**Number of objects:** 1

**Production date:** 1

**Acquisition:** gift

**Acquisition source:** English Antique Glass

**Accession number:** ELYGM:2008.8.12

**Permalink:**

<https://stainedglassmuseum.com/object/ELYGM:2008.8.12>



## Related objects

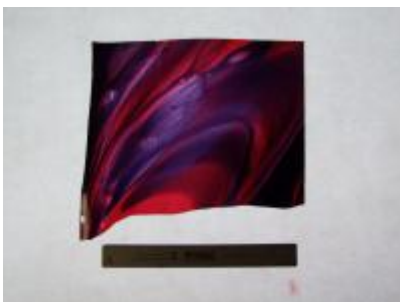
[ELYGM:2008.8.1](#)



[ELYGM:2008.8.2](#)

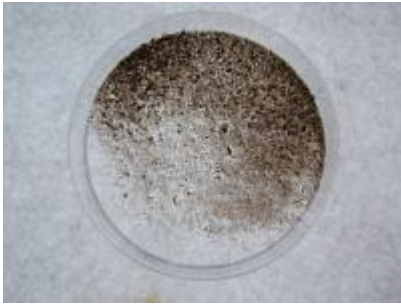


[ELYGM:2008.8.3](#)





[ELYGM:2008.8.4](#)



[ELYGM:2008.8.5](#)



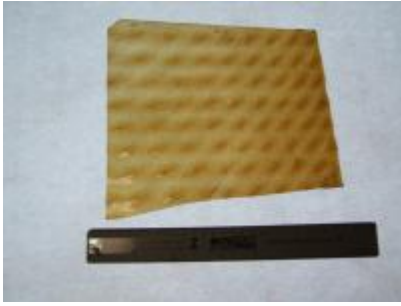
[ELYGM:2008.8.6](#)



[ELYGM:2008.8.7](#)



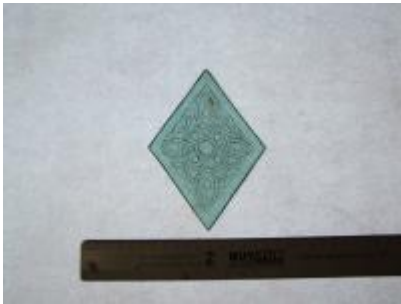
[ELYGM:2008.8.8](#)



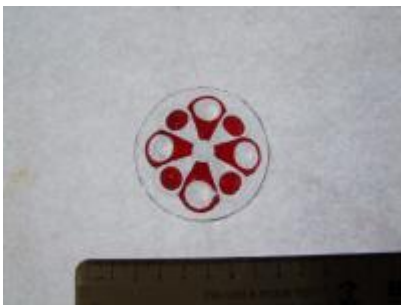
[ELYGM:2008.8.9](#)



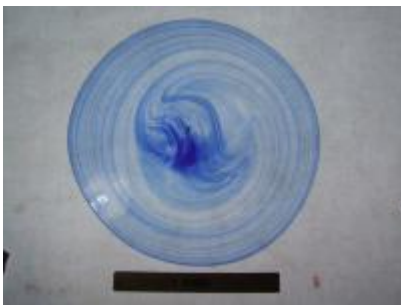
[ELYGM:2008.8.10](#)



[ELYGM:2008.8.11](#)



[ELYGM:2008.8.13](#)





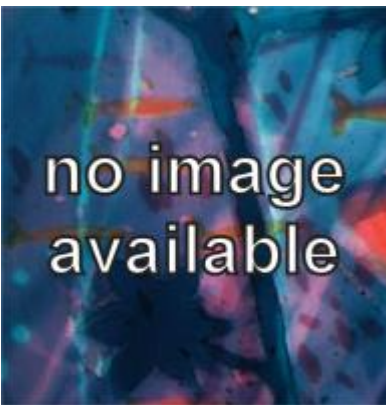
[ELYGM:2008.8.15](#)



[ELYGM:2008.8.16](#)



[ELYGM:2008.8.17](#)





Muff

