



Patterned Quarries

Brief description: Two quarries, one with a leaf pattern, the other with a Celtic style motif.

Two stamped quarries, one with a leaf pattern, the other with a Celtic style motif.

Object type: glass fragment

Number of objects: 2

Production date: 1

Dimensions: Height: 148 mm, Width: 105 mm

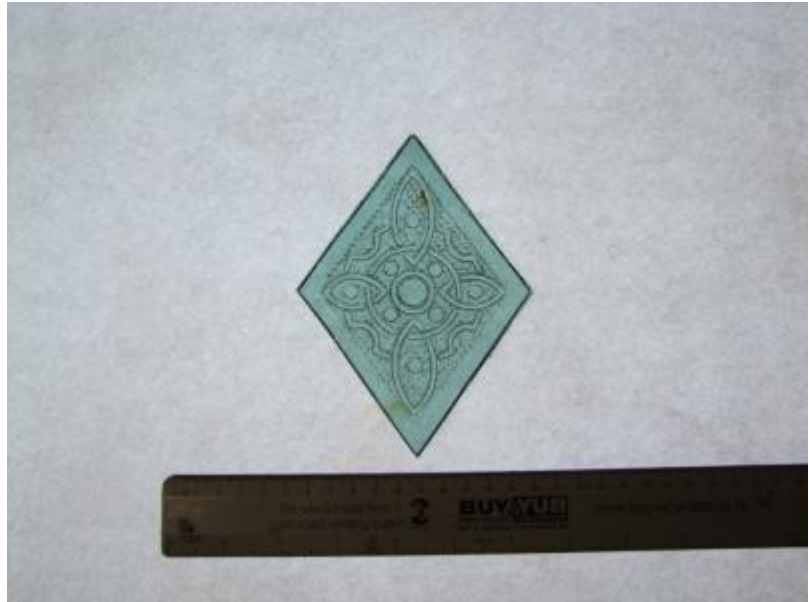
Acquisition: gift

Acquisition source: Wigley, George

Accession number: ELYGM:2008.8.10

Permalink:

<https://stainedglassmuseum.com/object/ELYGM:2008.8.10>



Related objects

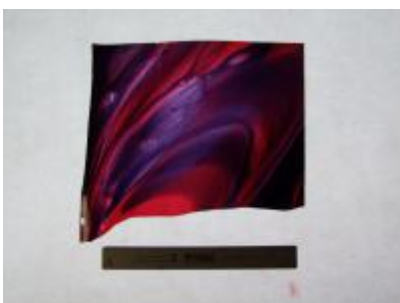
[ELYGM:2008.8.1](#)



[ELYGM:2008.8.2](#)

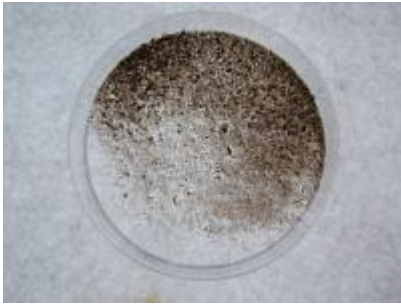


[ELYGM:2008.8.3](#)





[ELYGM:2008.8.4](#)



[ELYGM:2008.8.5](#)



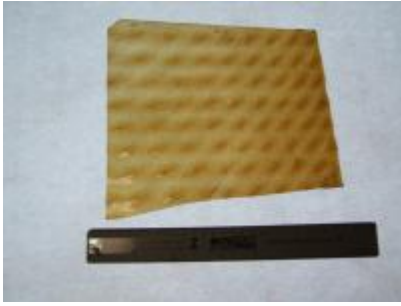
[ELYGM:2008.8.6](#)



[ELYGM:2008.8.7](#)



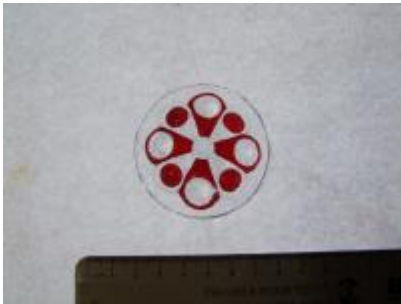
[ELYGM:2008.8.8](#)



[ELYGM:2008.8.9](#)



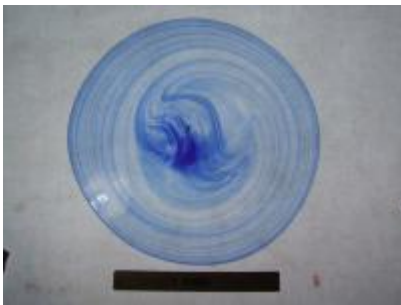
[ELYGM:2008.8.11](#)



[ELYGM:2008.8.12](#)



[ELYGM:2008.8.13](#)



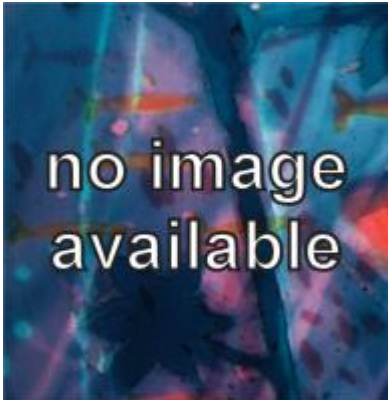
[ELYGM:2008.8.15](#)



[ELYGM:2008.8.16](#)



[ELYGM:2008.8.17](#)





Patterned Quarries

