



Brush Pot

Brief description: A coloured pot used in Thomas Cowell's studio. Pot metal container used to transfer glass from the furnace. Probably retained as a souvenir from the Whitefriars works prior to 1923

A coloured pot used in Thomas Cowell's studio. The pot is blue and has been glazed at the bottom

Object type: pot

Number of objects: 1

Production date: 1

Dimensions: Height: 128 mm, Width: 110 mm

Dedication: from the studio of Cowell, Thomas

Acquisition: gift 24.12.2008

Acquisition source: Wilson, John

This item is not currently on display and can only be viewed by prior arrangement

Accession number: ELYGM:2008.12.8

Permalink:

<https://stainedglassmuseum.com/object/ELYGM:2008.12.8>



Related objects

[ELYGM:2008.12.1](#)



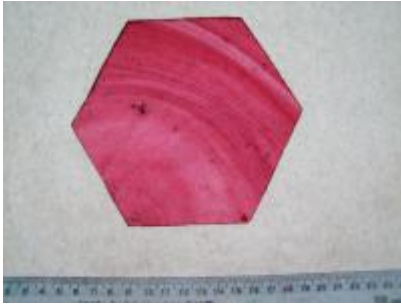
[ELYGM:2008.12.2](#)



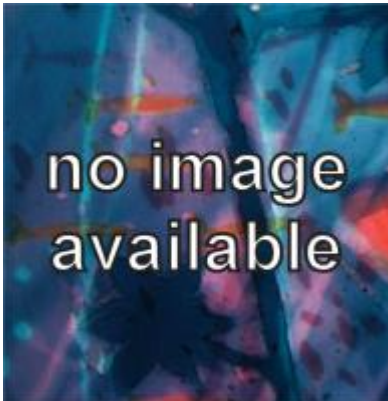
[ELYGM:2008.12.3](#)



[ELYGM:2008.12.4](#)



[ELYGM:2008.12.5](#)



[ELYGM:2008.12.6](#)



[ELYGM:2008.12.7](#)



[ELYGM:2008.12.17](#)



[ELYGM:2008.12.18](#)



[ELYGM:2008.12.19](#)



[ELYGM:2008.12.28](#)





Brush Pot

