



Pictures of Violence

Brief description: Stained glass panel combining different representations of violence. Designed and made by Rosalind Grimshaw in 1982.

This panel is a collage of images in which violence is not immediately obvious. Different representations of violence are brought together here, using a variety of stained glass techniques. In this complex composition, pieces of glass have been etched with acid, stained, plated and leaded to juxtapose different textures and tones. The imagery reflects a number of stories that the viewer can contemplate individually or as a combined statement on the theme of violence. The artist trained in the stained glass studio of Joseph Bell and Son in Bristol, founded in the Victorian Gothic Revival. She opened her own studio in 1996, and won the commission to design and create the Millennium Window for Chester Cathedral.

Object type: panel

Number of objects: 1

Production date: 1982

Production period: 20th century, late

Designer: Rosalind Grimshaw

Dimensions: Height: 970 mm, Width: 721 mm

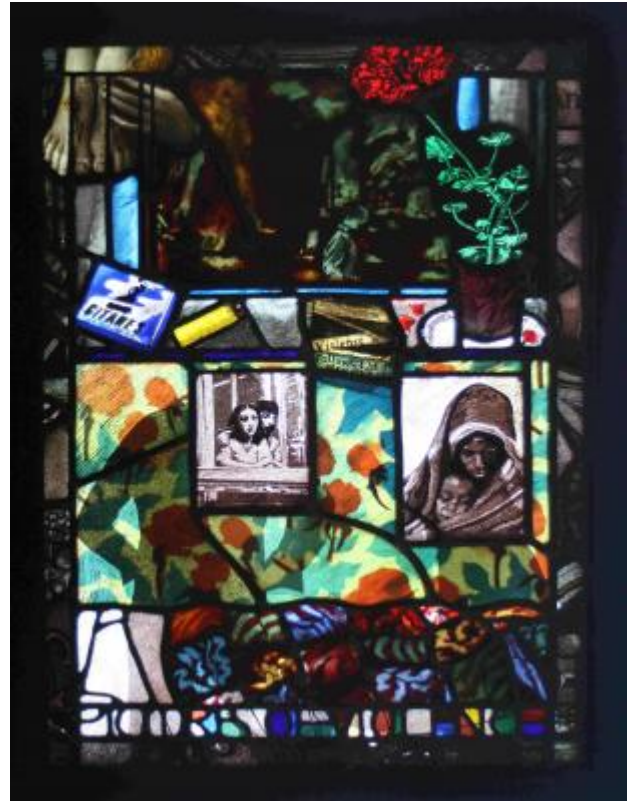
Inscription: painted on piece of glass below image of boy A young boy walks by vehicles set alight in West Belfast yesterday following the death of Mickey Devine. Violence follows 10th Maze death

Acquisition: purchase 27.2.2023

Acquisition source: The estate of Rosalind Grimshaw

Accession number: ELYGM:2007.4

Permalink: <https://stainedglassmuseum.com/object/ELYGM:2007.4>





Pictures of Violence

