



## Sketch of a medieval head

**Brief description:** A sketch of a head from the Southern Rose window at Notre Dame, Paris, France. Sketched by Thomas Cowell.

Painted face of man, with thick lines. Curls along hairline.

**Object type:** sketch

**Number of objects:** 1

**Production date:** 1

**Production period:** 20th century, early

**Manufacturer:** Cowell, Thomas 1870=1949

**Dimensions:** Height: 264 mm, Width: 205 mm

**Inscription:** Facsimile of a head / from Southern Rose Window / Notre Dame. Paris.

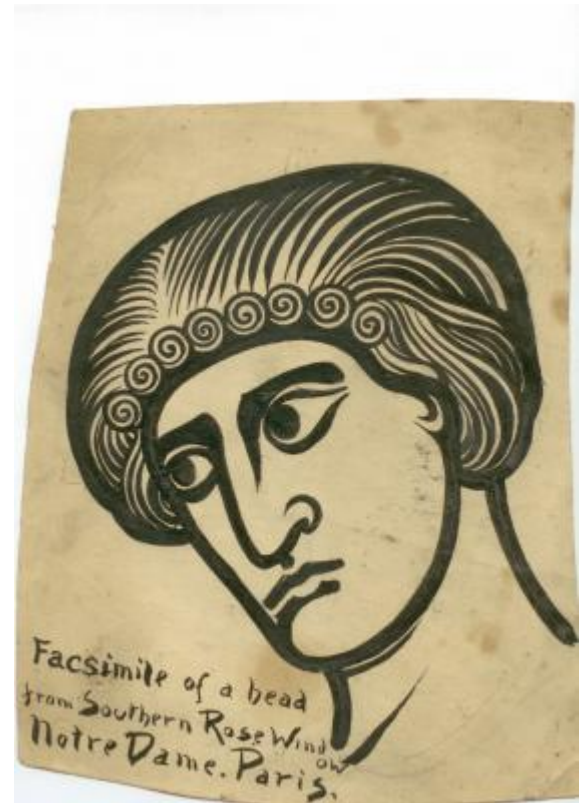
**Acquisition:** bequest 5.5.1993

**Acquisition source:** Estate of Thomas Cowell

This item is not currently on display and can only be viewed by prior arrangement

**Accession number:** ELYGM:1992.4.3c

**Permalink:** <https://stainedglassmuseum.com/object/ELYGM:1992.4.3c>



### *Related objects*

[ELYGM:1992.4.2a](#)



[ELYGM:1992.4.2b](#)



[ELYGM:1992.4.3b](#)



[ELYGM:1992.4.4](#)



[ELYGM:1992.4.5a](#)



[ELYGM:1992.4.5b](#)



[ELYGM:1992.4.6a](#)



[ELYGM:1992.4.6b](#)



[ELYGM:1992.4.8](#)



[ELYGM:1992.4.9](#)



[ELYGM:1992.4.11a](#)



[ELYGM:1992.4.11b](#)



[ELYGM:1992.4.12](#)



[ELYGM:1992.4.13a](#)



[ELYGM:1992.4.13b](#)



[ELYGM:1992.4.13c](#)



[ELYGM:1992.4.13d](#)



[ELYGM:1992.4.13e](#)



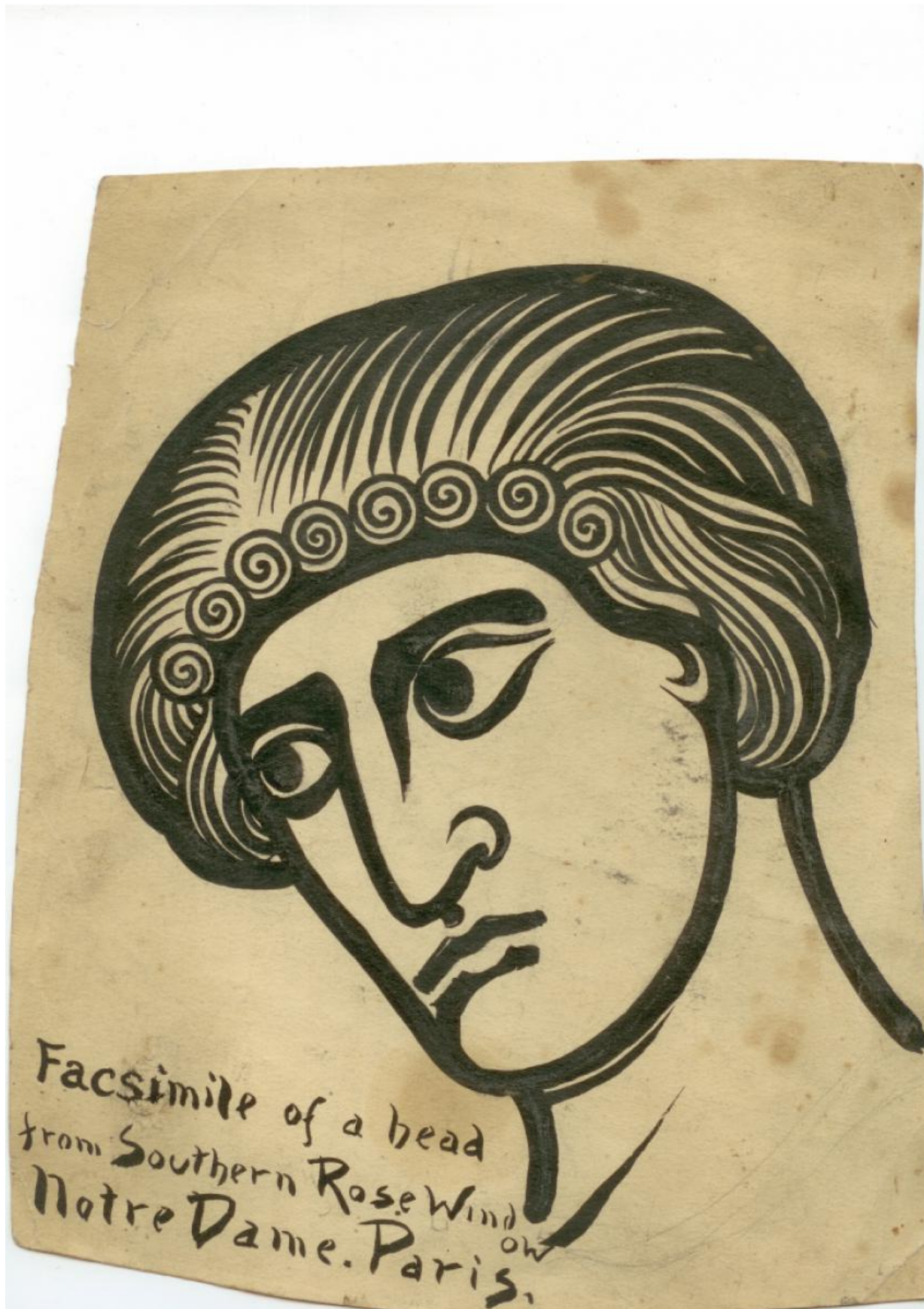
[ELYGM:1992.4.13f](#)







Sketch of a medieval head



Facsimile of a head  
from Southern Rose Window  
Notre Dame, Paris.