



Arms of All Saints

Brief description: Stained glass from the base of a light. Composed of white rectangular quarries of slab glass. Made by John Hayward, 1958

A stained glass panel made up of white rectangle quarries.

Object type: panel

Number of objects: 1

Production date: 1958

Production period: 20th century, mid

Designer: John Hayward

Dimensions: Height: 970 mm, Width: 900 mm

Inscription: base of ELYGM.1975.1.5 John Hayward 1958

Acquisition: gift 1975

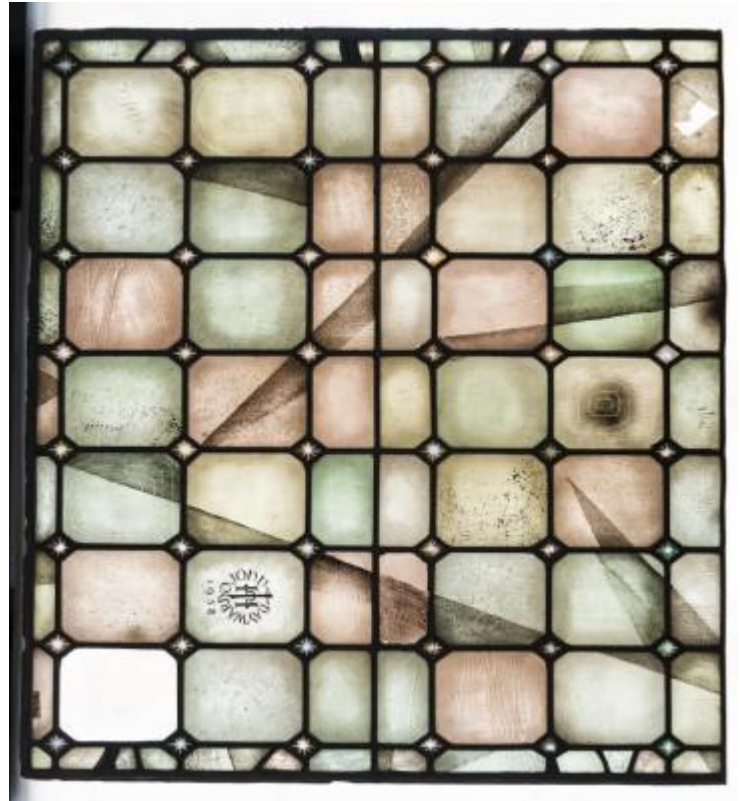
Acquisition source: Church Commissioners 1, Millbank, London, SW1P 3JZ

This item is not currently on display and can only be viewed by prior arrangement

Accession number: ELYGM:1975.1.5a

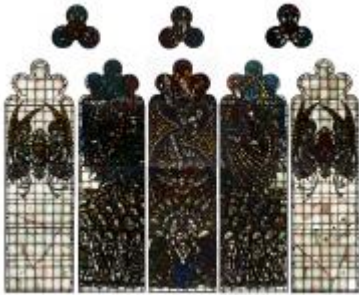
Permalink:

<https://stainedglassmuseum.com/object/ELYGM:1975.1.5a>



Related objects

[ELYGM:1975.1](#)



[ELYGM:1975.1.1](#)





[ELYGM:1975.1.1a](#)



[ELYGM:1975.1.1b](#)



[ELYGM:1975.1.1c](#)



[ELYGM:1975.1.1d](#)



[ELYGM:1975.1.2](#)



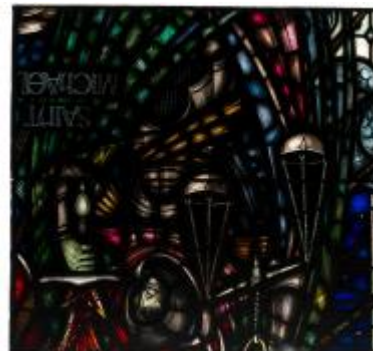
[ELYGM:1975.1.2a](#)



[ELYGM:1975.1.2b](#)



[ELYGM:1975.1.2c](#)





[ELYGM:1975.1.2d](#)



[ELYGM:1975.1.2e](#)



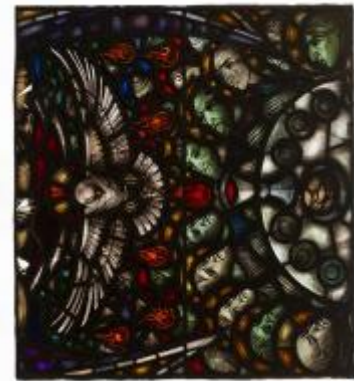
[ELYGM:1975.1.3](#)



[ELYGM:1975.1.3a](#)



[ELYGM:1975.1.3b](#)



[ELYGM:1975.1.3c](#)



[ELYGM:1975.1.3d](#)

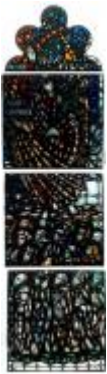




[ELYGM:1975.1.3e](#)



[ELYGM:1975.1.4](#)



[ELYGM:1975.1.4a](#)



[ELYGM:1975.1.4b](#)



[ELYGM:1975.1.4c](#)



[ELYGM:1975.1.4d](#)



[ELYGM:1975.1.4e](#)



[ELYGM:1975.1.5](#)



[ELYGM:1975.1.5b](#)



[ELYGM:1975.1.5c](#)



[ELYGM:1975.1.5d](#)





Arms of All Saints

