



## Arms of Diocese

**Brief description:** Stained glass multi lobed panel from pinnacle of light. Made up of white rectangle quarries. Made by John Hayward, 1958.

Multi lobed light made of stained glass, which shows two angels with long pointed wings, robes with tasselled belts.

**Object type:** panel

**Number of objects:** 1

**Production date:** 1958

**Production period:** 20th century, mid

**Designer:** John Hayward

**Dimensions:** Height: 640 mm, Width: 960 mm

**Inscription:** on base John Hayward 1958

**Acquisition:** gift 1975

**Acquisition source:** Church Commissioners 1, Millbank, London, SW1P 3JZ

This item is not currently on display and can only be viewed by prior arrangement

**Accession number:** ELYGM:1975.1.1d

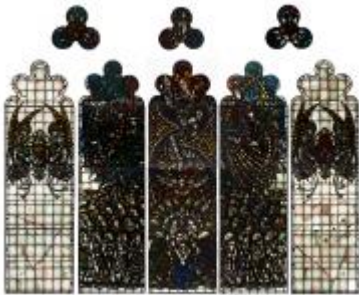
**Permalink:**

<https://stainedglassmuseum.com/object/ELYGM:1975.1.1d>



## Related objects

[ELYGM:1975.1](#)



[ELYGM:1975.1.1](#)





[ELYGM:1975.1.1a](#)



[ELYGM:1975.1.1b](#)



[ELYGM:1975.1.1c](#)



[ELYGM:1975.1.2](#)



[ELYGM:1975.1.2a](#)



[ELYGM:1975.1.2b](#)



[ELYGM:1975.1.2c](#)





[ELYGM:1975.1.2d](#)



[ELYGM:1975.1.2e](#)



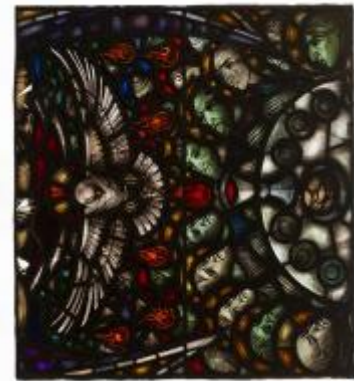
[ELYGM:1975.1.3](#)



[ELYGM:1975.1.3a](#)



[ELYGM:1975.1.3b](#)



[ELYGM:1975.1.3c](#)



[ELYGM:1975.1.3d](#)

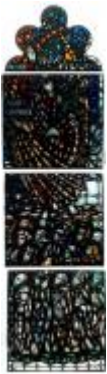




[ELYGM:1975.1.3e](#)



[ELYGM:1975.1.4](#)



[ELYGM:1975.1.4a](#)



[ELYGM:1975.1.4b](#)



[ELYGM:1975.1.4c](#)



[ELYGM:1975.1.4d](#)



[ELYGM:1975.1.4e](#)



[ELYGM:1975.1.5](#)



[ELYGM:1975.1.5a](#)



[ELYGM:1975.1.5b](#)



[ELYGM:1975.1.5c](#)





[ELYGM:1975.1.5d](#)





Arms of Diocese

