



## Arms of Diocese

**Brief description:** Stained glass panel from top of light. Two angels are depicted holding shield of the Diocese of London. Made by John Hayward, 1958.

Top of stained glass panel, which shows two angels with long pointed wings, robes with tasselled belts.

**Object type:** panel

**Number of objects:** 1

**Production date:** 1958

**Production period:** 20th century, mid

**Designer:** John Hayward

**Dimensions:** Height: 880 mm, Width: 970 mm

**Inscription:** latin words on red and white shield held by two angels on shield SANCTUS SANCTUS SANCTUS

**Acquisition:** gift 1975

**Acquisition source:** Church Commissioners 1, Millbank, London, SW1P 3JZ

This item is not currently on display and can only be viewed by prior arrangement

**Accession number:** ELYGM:1975.1.1c

**Permalink:**

<https://stainedglassmuseum.com/object/ELYGM:1975.1.1c>



## Related objects

[ELYGM:1975.1](#)



[ELYGM:1975.1.1](#)



[ELYGM:1975.1.1a](#)



[ELYGM:1975.1.1b](#)



[ELYGM:1975.1.1d](#)



[ELYGM:1975.1.2](#)



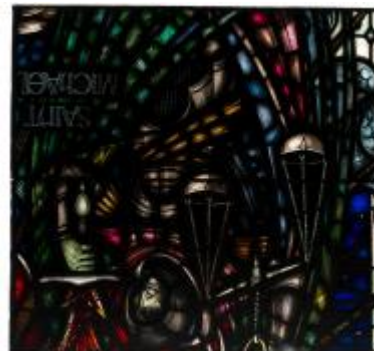
[ELYGM:1975.1.2a](#)



[ELYGM:1975.1.2b](#)



[ELYGM:1975.1.2c](#)





[ELYGM:1975.1.2d](#)



[ELYGM:1975.1.2e](#)



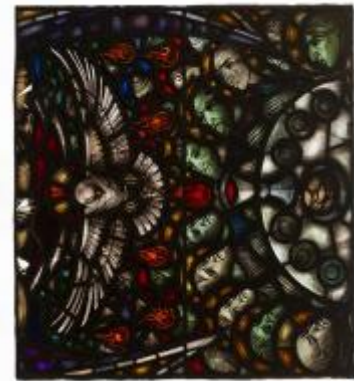
[ELYGM:1975.1.3](#)



[ELYGM:1975.1.3a](#)



[ELYGM:1975.1.3b](#)



[ELYGM:1975.1.3c](#)



[ELYGM:1975.1.3d](#)

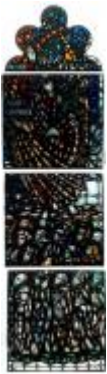




[ELYGM:1975.1.3e](#)



[ELYGM:1975.1.4](#)



[ELYGM:1975.1.4a](#)



[ELYGM:1975.1.4b](#)



[ELYGM:1975.1.4c](#)



[ELYGM:1975.1.4d](#)



[ELYGM:1975.1.4e](#)



[ELYGM:1975.1.5](#)



[ELYGM:1975.1.5a](#)



[ELYGM:1975.1.5b](#)



[ELYGM:1975.1.5c](#)





[ELYGM:1975.1.5d](#)





Arms of Diocese

